



MARC BOARD
MARCH 25, 2025

WHAT IS A METROPOLITAN TRANSPORTATION PLAN (MTP)?

- Required planning document for our metro. Update required every 5 years
- Sets vision, establishes goals and identifies regionally significant projects
- Guides how regional transportation system will be developed for next 25 years



Major streets and highways



Public transportation

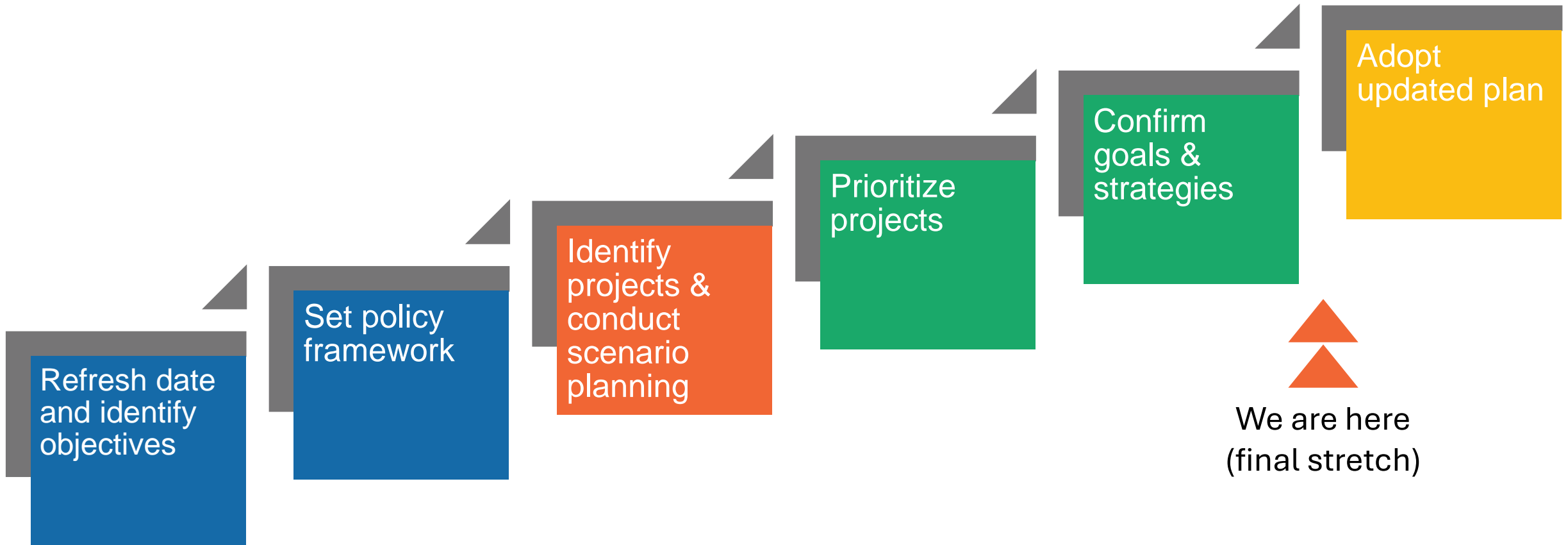


Bike & pedestrian accessibility



Freight transportation

UPDATE TIMELINE



We are here
(final stretch)

Kick-off

Public Engagement & Outreach

KEY FINDINGS

SCENARIO PLANNING

WE TESTED FOUR LAND USE DEVELOPMENT SCENARIOS TO SEE THE FUTURE:

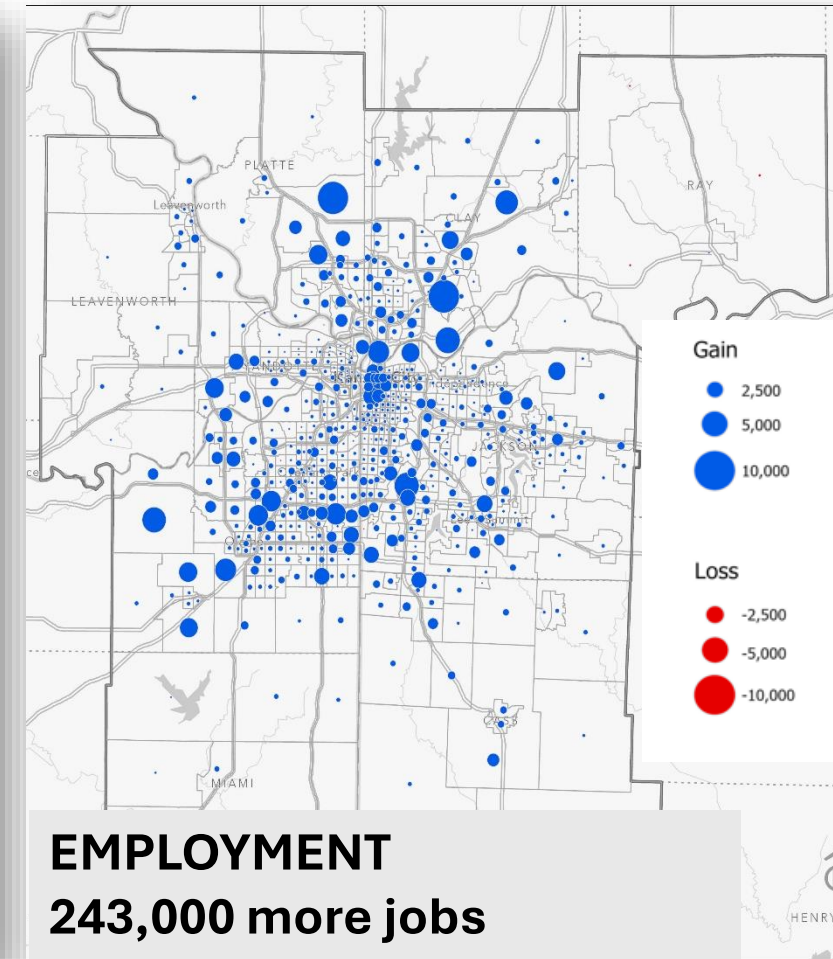
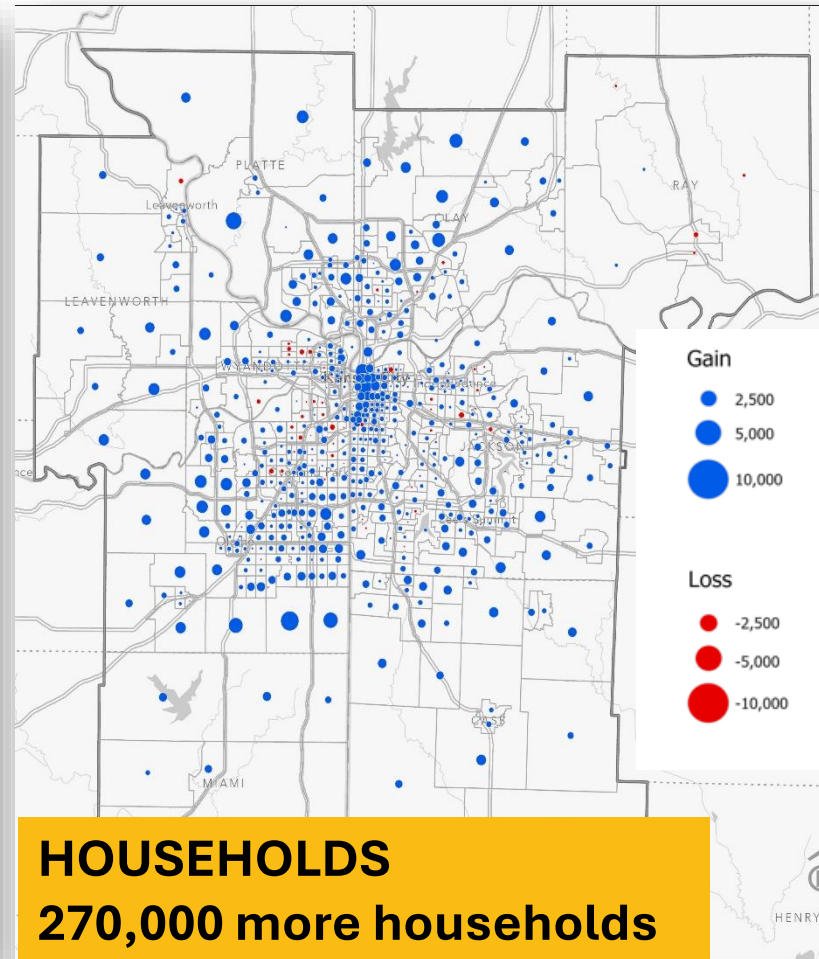
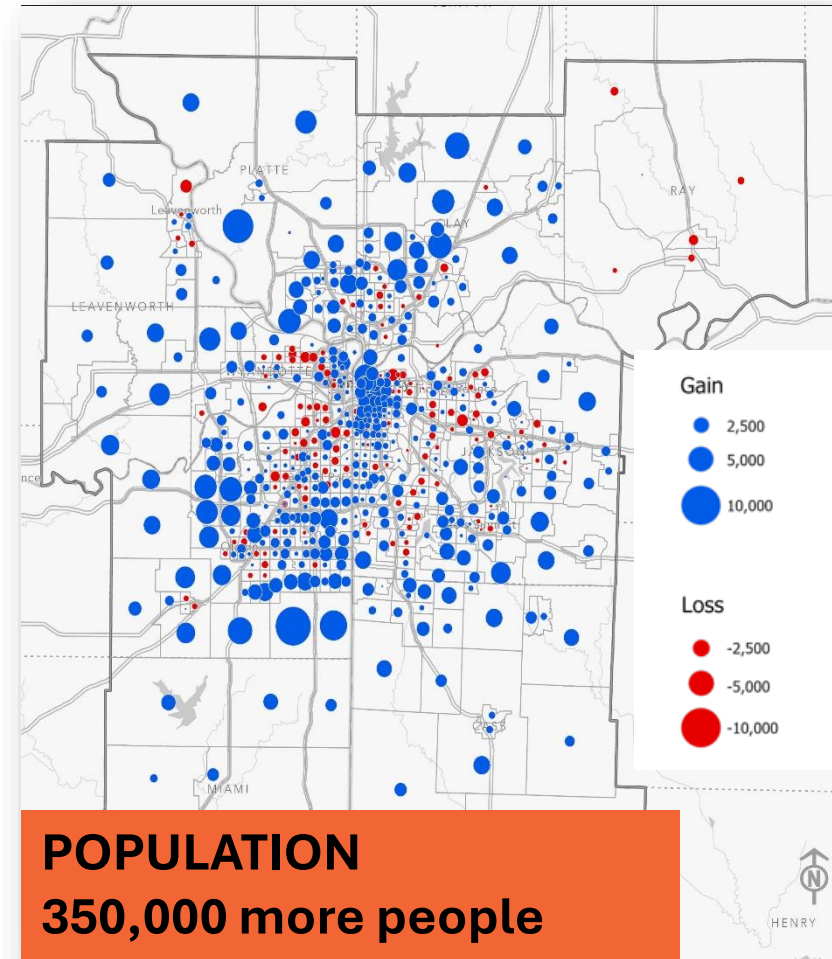
- Higher/lower than anticipated population growth rates vs. more compact/dispersed land use



WHAT WE LEARNED:

- *In slow growth and high growth futures, best investment and growth strategy = focused growth with heavy multimodal investments*

LAND USE FORECAST



Our rate of growth is slowing down. Our region is also becoming older and significantly more diverse. Households will also shrink in size.

FINANCIAL CAPACITY ANALYSIS

FORECAST

- Re-evaluate transportation funding through 2050
- Based on past and recent investment levels projected forward



OUTCOMES

- Funding sufficient for highway/roadway management, operations and limited expansion for economic development and congestion relief.
- *No revenue forecasted for new transit projects or services as temporary COVID-19 federal funding ends*

ENGAGEMENT & OUTREACH

MOST REGIONAL RESIDENTS...



Strongly support:

- Healthy environment = clear air and water
- Keeping roads and bridges in good condition
- Increased safety on all types of transportation modes
- Affordable housing as a major need

- Believe we should prioritize or support projects and programs that address the needs of disadvantaged populations
- Support regional or county-level investments in public transportation to expand transit options across the region



Electric vehicles met with mixed support

PERFORMANCE-BASED PLANNING



Safety measures biggest immediate concern

Infrastructure condition measures trending positively (interstate system) but stalling or trending negatively (non-interstate)

System performance measures all on track to beat 2023 targets. We have a highly reliable roadway network with low congestion

Transportation choices reflect that most transportation system users rely on single-occupant vehicles and access to our transit system remains low

Environment & public health measures remain generally steady, but not making any progress



PLAN ELEMENTS

UPDATED POLICY FRAMEWORK



GOAL — HOUSING



**STRATEGY — DIGITAL
CONNECTIVITY and
HOUSING
COORDINATION**



**LANGUAGE
UPDATES**

FEDERAL POLICY LANDSCAPE

FEDERAL POLICY LANDSCAPE HAS SHIFTED

- Various executive orders and USDOT orders add additional scrutiny to:
 - Climate work
 - Diversity, equity and environmental justice considerations
 - Electric-vehicle related programs and strategies, among other areas
- 1994 Environmental Justice revoked



STAFF IS REVIEWING PLAN FOR CLARITY AND TO RESPOND APPROPRIATELY.

PROJECTS

59
agencies

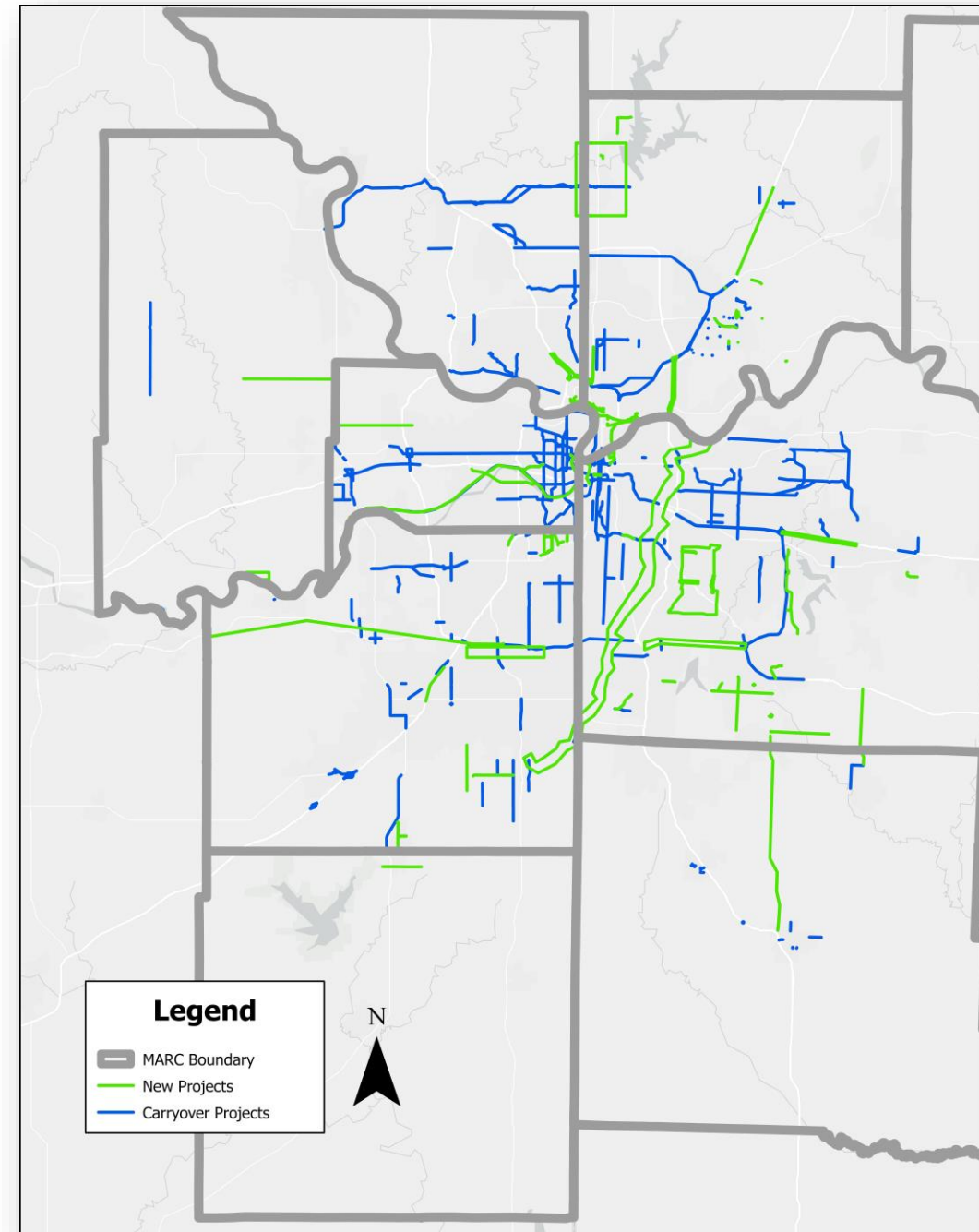
526
projects (\$25.1b)

240
financially constrained projects

- 144 existing transportation system rehab (\$5.2b)
- 96 system expansion or new facilities (\$5.4b)

286
illustrative projects (\$14.5b)

Project categories: Kansas state system, Kansas local system, Missouri state system, Missouri local system and transit projects



RECOMMENDED WORK (POST ADOPTION)



Transit funding & implementation



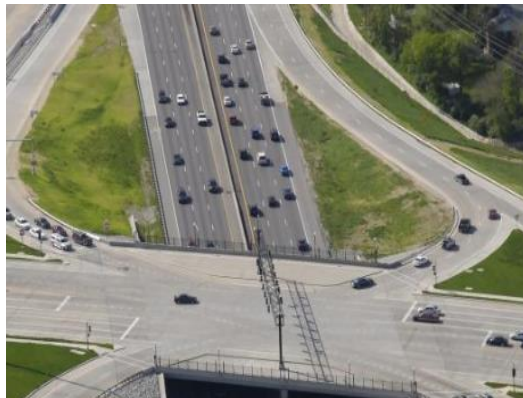
Continue Complete Streets implementation across region



Identify and prioritize multimodal freight projects



MARC Committee structure and process review

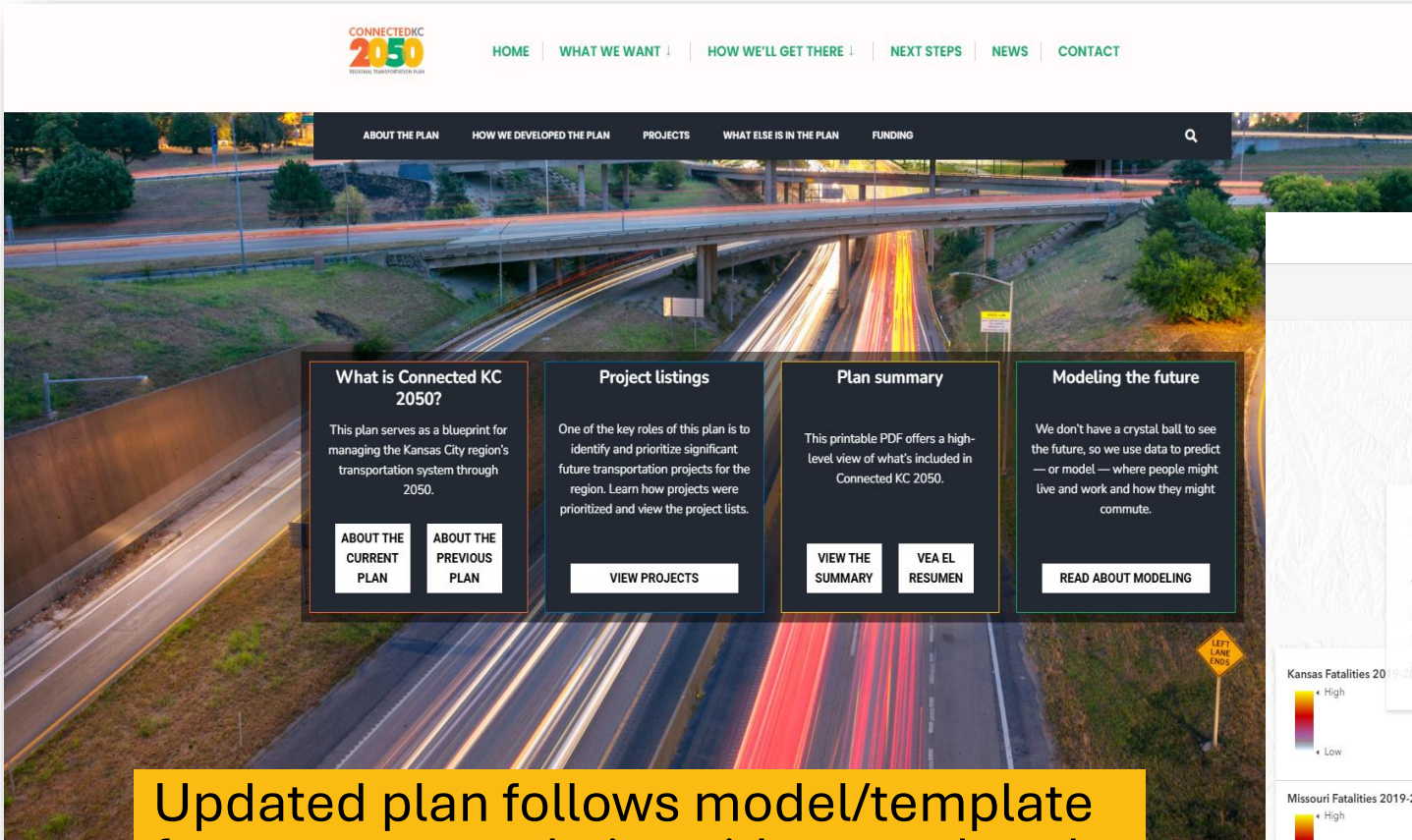


Update project programming processes

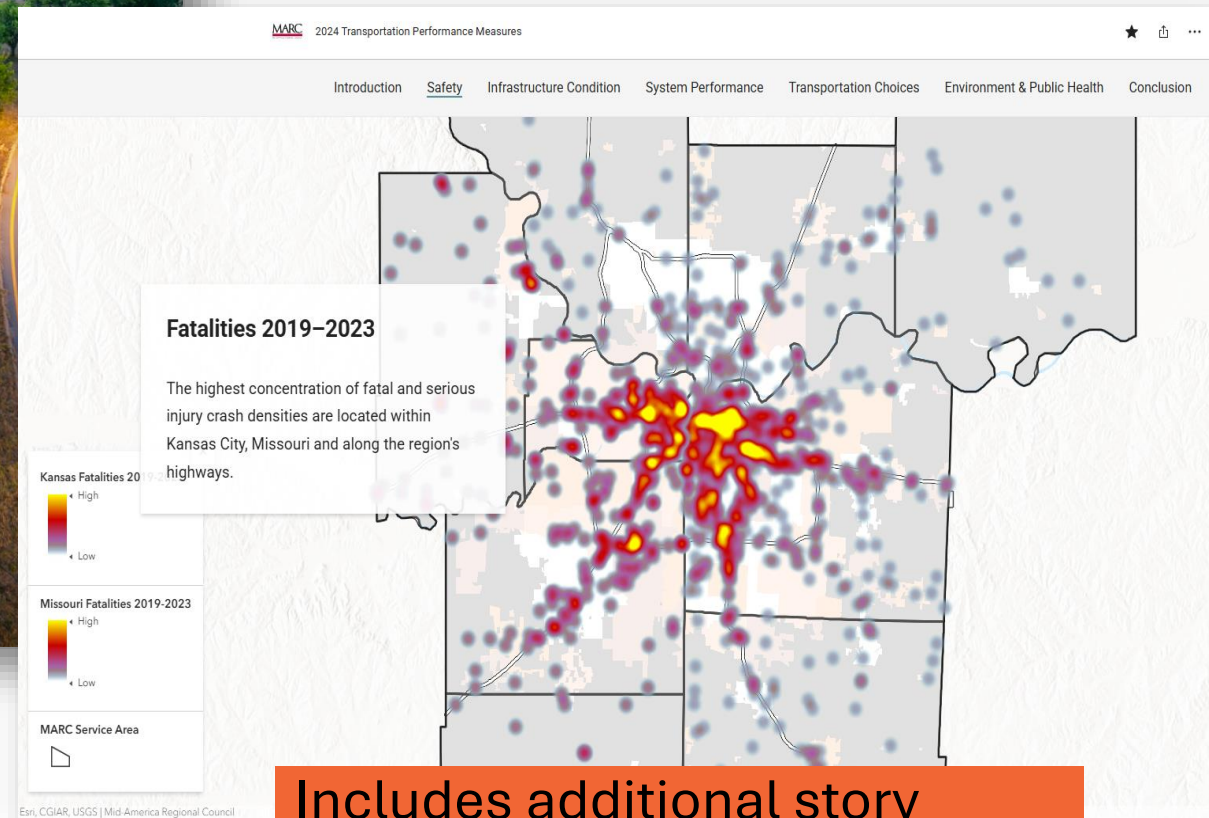


Support strategic corridor planning

PLAN WEBSITE



Updated plan follows model/template from current website with an updated look and feel



Includes additional story maps and fewer PDF files for easier public viewing

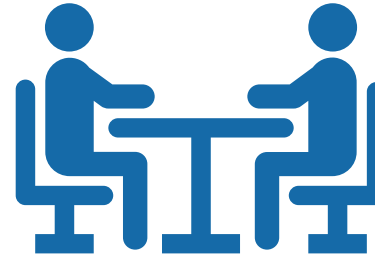
WHAT'S NEXT?



**Complete draft
plan
write up
(1Q ~ 2Q 2025)**



**Release draft plan
for public review
and comment
(April 2025)**



**Final round
of public
engagement
(May 2025)**



**Approval by TTPC
and MARC Board
of Directors
(June 2025)**



CONNECTED KC
2050
UPDATE
REGIONAL TRANSPORTATION PLAN
THANK YOU!