

600 Broadway, Suite 200
Kansas City, Missouri 64105-1659

816-474-4240
816-421-7758 FAX
marcinfo@marc.org
www.marc.org



Active Transportation Programming Committee Meeting Summary

Meeting Date: Wednesday, September 25, 2024 (special meeting)

Time: 10:30 AM to 12:30 PM

Location: Online via Zoom.

Attendees:

Adam Hilgedick, City of Blue Springs
Alex Lopez, City of Independence
Allison Smith, KDOT
Alysen Abel, City of Spring Hill
Athena Huynh, City of Grandview
Bailey Waters, City of Kansas City, MO
Brian Nowotny, Jackson County Parks +
Rec(co-chair)
Cecelie Cochran, FHWA-MO
Chuck Soules, City of Smithville
Dick Tuttle, City of Grain Valley
Donnie Scharff, City of Roeland Park
Doug Wesselschmidt, City of Grandview
Eric Rogers, BikeWalkKC
George Binger, City of Lee's Summit
Jared Elbert, City of Grandview Parks &
Recreation
John Davis, Clay County Parks
John Jacobson, Leavenworth County
John Neuberger, Sierra Club (KS co-
chair)
Juan Yin, MoDOT
Kristie Reitingler, Miami County
Leslee Rivarola, City of Bashor
Lisa Donnelly, Jackson County Parks +
Rec
Lisa Treese, City of Kansas City, MO
Parks & Recreation
Loren Snyder, City of Kearney
Maddie Bouton, City of Basehor
Mark Lee, City of Bonner Springs
Mark Trosen, City of Grain Valley

Matt Denton, City of Smithville
Matt McLaughlin, City of Independence
Matt Nolker, City of Lawson
Mayra Toothman, City of Smithville
Mike Burton, City of Overland Park
Mike Duffy, City of Riverside
Mira Felzien, KCATA
Nicole Brown, Johnson County Dept. of
Health and Environment
Noel Bennion, City of Riverside
Randy Gorton, BHC
Robinson Camp, City of Raytown
Rodney Honeycutt, City of
Independence
Rodney Riffle, Johnson County Parks
and Recreation District
Ryan Dickey, City of Independence
Shawn Gotfredson, City of Overland
Park
Shelby Teufel, City of Pleasant Hill
Steve Casey, City of Lee's Summit
Steve Hauck, City of Shawnee
Steve Schooley, City of Lenexa
Ted Smith, Platte County
Thomas Degenhardt, City of Blue
Springs
Tod Hueser, City of Olathe
Tom Garland, City of Liberty
Travis Hoover, City of Riverside
Vernon J. Fields, City of Basehor
Wendy Shay, City of Independence
Wes Minder, Platte County

Will Sharp, FHWA-KS

Zach Baker, City of Olathe

MARC Staff:

Cy Smith
Katie Newman
Lukas Yanni
Martin Rivarola
Patrick Trouba

Agenda:

1. Welcome and Introductions

2. VOTE: Approve the September 25, 2024 Meeting Summary

- a. Chuck Soules motioned to approve.
- b. Nicole Brown seconded the motion.
- c. **Motion passes.**

3. Project presentations

Sponsors gave short presentations on projects for which they have applied for federal TAP funding. *Please see the attached slides for more details.*

4. Adjournment

Before adjournment, Patrick Trouba laid out next the next steps in the Active Transportation Programming Committee programming process.



Active Transportation Programming Committee

September 25, 2024

Please enter your name and organization in the chat window so that we may have an accurate record of attendance

Agenda




- 1) Welcome
- 2) VOTE: Approve the August 14 meeting summary
- 3) Project Presentations
- 4) Adjournment

1

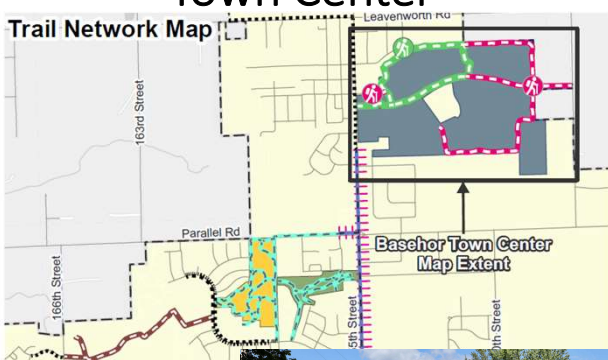




VOTE: Approve the August 14, 2024 meeting summary

2

Sponsoring Agency:	Project:
<h1>City of Basehor</h1>	<h1>Coralberry Trail</h1>
<ul style="list-style-type: none"> Project Description: Coralberry Trail is identified in the City of Basehor's Active Transportation Plan as a high-priority trail. It provides opportunities to connect residents of the Hidden Ridge Subdivision to the community at large via a safe walking/biking path. This trail supports the regional trail and biking system as has been identified in MARC policies and plans. This trail will connect users to high intensity activity centers including Civic Campus and Basehor Town Center via a trail network that offers opportunities for bike sharing and EV charging stations. The proposed trail is approximately 3,300 linear feet, 10' wide and concrete. The trail head will be located east of 166th & Coralberry and terminate near 158th & Garden Parkway. This trail will preserve and enhance the tree canopy and provide native plantings and amenities such as pollinator gardens, rain gardens, benches and bike stations. Total TAP Request: \$1,500,000 Total CMAQ Request: \$0 Total Match: \$605,000 Phaseable/Scalable: No 	  

3

Sponsoring Agency:	Project:
<h1>City of Basehor</h1>	<h1>Trails at Basehor Town Center</h1>
<ul style="list-style-type: none"> Project Description: The City owns 240 acres of land that is known as "Basehor Town Center." (BTC) located at 155th & Basehor Blvd. The master plan provides for 40 acres of multi-family development (592 units), 40-acres of park land, commercial, community center and a farmer's market. This project consists of a 10' wide multi-use path totaling 1.3 miles in length. This phase 1 trail provides connections to existing activity centers including an existing school facility. This trail will provide opportunities for recreation, tree and native species plantings, amenities and future bike sharing opportunities. This trail will connect to the improvements along 155th Street, which includes a multiuse path connection to Metro Green Trail and ultimately to the trails at the Civic Campus. The total trail network will consist of nearly five-miles of trail, the majority of which is outside of roadways, providing the safest pedestrian environment. Total TAP Request: \$1,500,000 Total CMAQ Request: \$0 Total Match: \$1,640,000 Phaseable/Scalable: Yes 	  

4

BikeWalkKC – KS Safe Routes to School

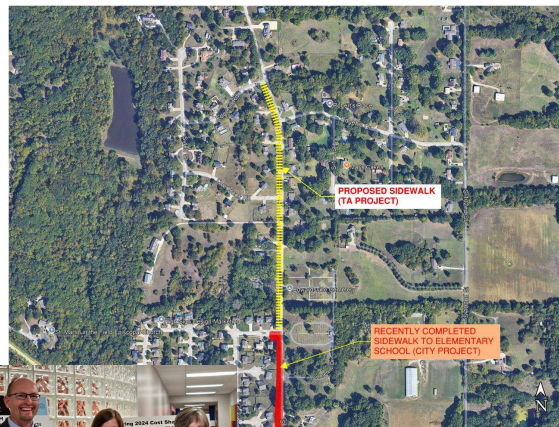
- Project description: Continue SRTS non-infrastructure programming in Kansas.
- Total TAP request: \$300,000.00 *
- Total CMAQ request: \$300,000.00 *
- Total match: \$75,000
- Phaseable/Scalable: Yes



5

104th Sidewalk Extension - City of Edwardsville, KS

- Project description: Construct a 5' sidewalk to extend pedestrian connectivity from Metropolitan Ave to W. Edgehill Road, extending recent sidewalk improvements that connect residential areas to the elementary school.
- Total TAP request: \$400,000
- Total CMAQ request: \$0
- Total match: \$290,000
- Phaseable/Scalable: Yes, sidewalk limit could be adjusted based on awarded funding



Recent sidewalk installation was selected for KDOT Cost Share funds during visit by Gov. Kelly (City ultimately did not use those funds at that time).

6

City of Lenexa

- Ped Accommodations at Traffic Signals (6 intersections) and Connecting Sidewalk Links (2 locations).
- Total TAP request: \$1,100,000
- Total CMAQ request: \$1,100,000
- Total match: \$500,000
- Phaseable/Scalable: Yes, with reduced number of intersections.



7

City of Lenexa

- Signalization and Pedestrian Accommodations at 87th & Scarborough
- Support mixed use development at Lenexa City Center
- Total TAP request: \$1,100,000
- Total CMAQ request: \$1,100,000
- Total match: \$500,000
- Phaseable/Scalable: Yes, with reduced scope of work.



8

City of Olathe, Kansas

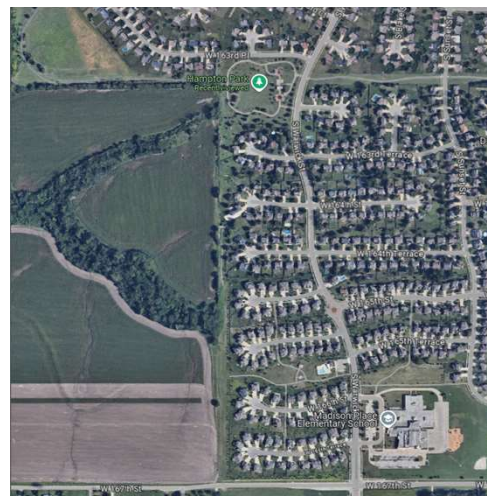
- Project description: Cedar Creek Trail Phase IV is the last link in the chain connecting trail users from Cedar Niles Park (JCPRD) with Lake Olathe Park and with Cedar Lake Park. This bridge/boardwalk will be wide enough to accommodate many users. Lighting will help make this trail improvement a nighttime attraction as well. A trailhead will accompany the trail, and it will be equipped with a restroom, accessible parking, green infrastructure, etc.
- Total TAP request: \$500,000
- Total CMAQ request: \$0
- Total match: \$1,975,000
- Phaseable/Scalable: No. The proposed trailhead off Dennis Ave. could be built in the future. However, it would be unfortunate if the trailhead couldn't be established in tandem with the bridge/boardwalk improvements.



9

City of Olathe, Kansas

- Project description: Indian Creek Trail – Hampton Park to 167th St. is the last segment of the Indian Creek Trail. This trail is significant because of its connection to 167th Street. Where this proposed trail intersects with the sidepath on 167th, this is “top” of the watershed for Coffee Creek. The City is working on a corridor study for the future Coffee Creek Trail. This is also the location where, when the Cedar Creek Trail extends south in the future, patrons will be able to access Lone Elm Park, Indian Creek Trail and the Coffee Creek Trail.
- Total TAP request: \$500,000
- Total CMAQ request: \$0
- Total match: \$1,675,000
- Phaseable/Scalable: No.



10

CITY OF OVERLAND PARK, KANSAS

- **143RD STREET TRAIL IMPROVEMENT:** The 143rd Street trail connection will construct a missing (approximately) 500' lineal foot section of Bike/Hike trail south of 143rd street east of US 69 highway. This section is often referred to as the Hilltop Campus trail. The site was a former 'Water One Utility' water tower. Overland Park has recently taken ownership of the property in 2022. The property acquisition will provide a new critical connection along the east side of the US 69 corridor which extends north to 123rd street and south to 151st street. The new trail will provide connections to nearby activity centers on the east, Blue Valley Learning Campus and Blue Valley Recreation along with creating an at grade, pedestrian refuge crossing in the 143rd street median. The trail will improve the connection along US 69 Highway allowing residents to commute uninterrupted by bicycle, e-bike or walking over the 3.5 mile corridor from 123rd street on the north to 151st street on the west.
- Total TAP request: **\$240,000.00**
- Total CMAQ request: **\$0**
- Total match: **\$240,000.00**
- Phaseable/Scalable: Yes, the trail extension could be built from the dead end north to 143rd street north, without including the pedestrian refuge.

143rd STREET TRAIL EXTENSION AND ALIGNMENT

11

Metcalf Avenue Sidewalk, 65th to 71st

Construction of new 6' sidewalk connecting northern Overland Park to our vibrant expanding downtown. Project includes sidewalk, landscaping, drainage and accessibility enhancements.

Total TAP request: \$1,500,000

Total match: \$375,000

Phaseable/Scalable: No

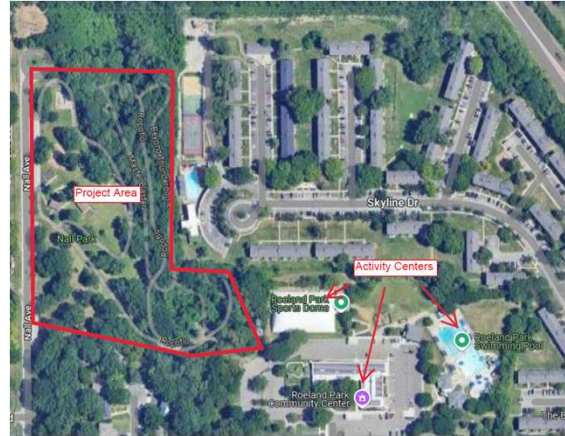




12

City of Roeland Park

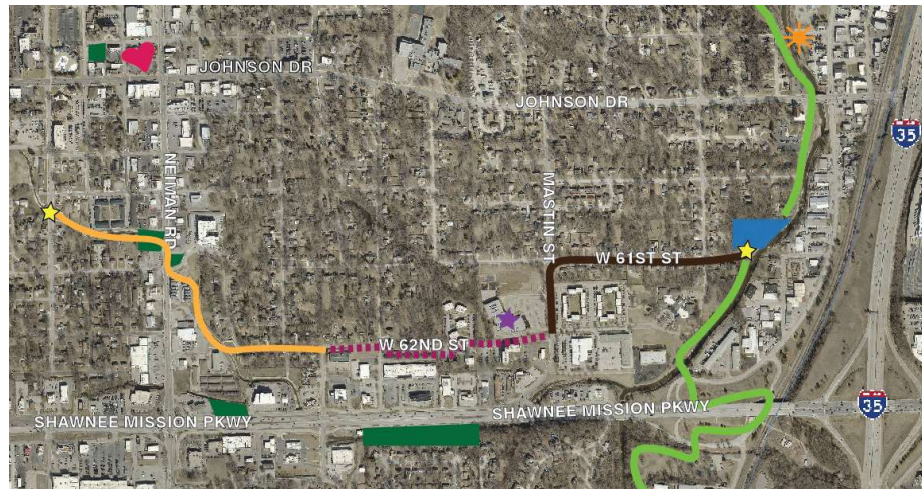
- **Project description:** This project is located within Nall Park in the City of Roeland Park, KS. The project includes construction of approximately 1,100-feet of new 8' to 10' wide recreational trail that will extend the existing recreational trail system within the park and connect to the Roeland Park Community Center, Aquatic Center, and JCPRD Sports Dome adjacent to Nall Park. The project also includes rehabilitation of approximately 2,288-feet of existing 8' wide recreational trail along with approximately 1,050-feet of riparian restoration to the stream corridor within Nall Park.
- **Total TAP request:** \$804,080
- **Total match:** \$201,020
- **Phaseable/Scalable:** Yes, the project could potentially be phased by removing the existing trail restoration/system preservation portion of the project and constructing only the new trail connection along with the riparian restoration.



13

Cities of Shawnee and Merriam, KS

- Turkey Creek Trail (Merriam) & Oxbow Trail (Shawnee) connection
- **Total Budget:** \$979,616
 - TAP request: \$783,693
 - Match: \$195,923
- **Phaseable:** Yes



Legend

- Oxbow Trail
 - Turkey Creek Streamway Trail
 - Existing Sidewalk
 - - - Proposed Addition
 - Shawnee Public Parks
- ★ Merriam Park Elementary School
 - ♥ Downtown Shawnee
 - ★ Downtown Merriam
 - ★ Campbell Park
 - ★ Trail Heads

14

City of Shawnee

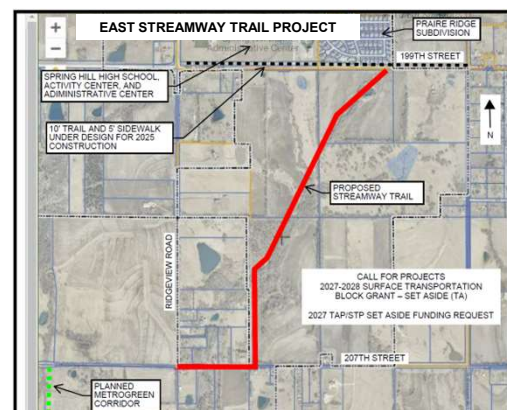
- Project description: This project will provide mobility and accessibility improvements at seven signalized intersections in Shawnee by improving pedestrian facilities to bring them into compliance with the Americans With Disabilities Act. These locations are in heavily travelled corridors where pedestrians commonly cross the roadway. This is Phase 2 of a project that received TAP funding in the 2021-2022 round of funding.
- Total TAP request: \$480,000
- Total match: \$120,000
- Scalable: This project is extremely scalable because it's composed of ADA traffic signal work at seven different signalized intersections. We can add or subtract projects based on the funding available.

15

CITY OF SPRING HILL KS

East Streamway Trail Project

- 1.2 miles of 10-foot trail along Stream Corridor
 - Total Estimated Project Cost = \$1,365,382
 - Engineering = \$133,652
 - R/W Costs = \$40,000
 - Construction = \$1,191,730
 - Total TAP Request: \$953,384
 - Total Local Match: \$238,346 (20%)
 - Phaseable/Scalable: No
 - Limit impacts to Stream Corridor



THE CITY OF
Spring Hill
KANSAS

16

BikeWalkKC – MO Bike Share

- Project description: Renewal and expansion of the Missouri bike share program
- Total TAP request: \$480,000 *
- Total CMAQ request: \$480,000.00 *
- Total match: \$120,000
- Phaseable/Scalable: Yes



17

BikeWalkKC – MO Safe Routes to School

- Project description: Continue SRTS non-infrastructure programming in Missouri
- Total TAP request: \$400,000.00 *
- Total CMAQ request: \$400,000.00 *
- Total match: \$100,000
- Phaseable/Scalable: Yes



18



Blue Springs, Missouri

- Project description:
 - Construct and repair sidewalk along 7 Hwy from 40 Hwy to Liggett Road. 3rd consecutive phase of three.
 - Sidewalk addition/fill in along regional spine of City. Provides safe path for pedestrians and updates traffic signals to accommodate bike/ped.
 - Connects growing (residential) southern half of City to commercial centers along 7 and 40 Highways.
- Total TAP request: \$1,000,000
- Total CMAQ request: \$3,000,000
- Total match: \$800,000
- Phaseable/Scalable: Yes
 - Phaseable - 3rd Phase of this project. (Phase 1 Complete, Phase 2 in Design –Bid Jan 2025)
 - Scalable – Could reduce to sidewalk on one side of Highway



19

Clay County Parks

Smithville Lake to Kearney Trails Project Phase II

- 5.7-mile pedestrian/ bicycle trail
- Asphalt surface
- Connects Smithville Lake trails to Mack Porter Park, Kearney.
- Begins a connection across northern Clay County.
- Near Mt. Gilead Historic Site.
- Future connection to elementary school.
- Connection to downtown Kearney.

Total TAP request: \$8,550,000

Total CMAQ request: 0

Total match: \$1,710,000

Phaseable/ Scalable: Yes 2 to 4 years.



20

GRAIN VALLEY MISSOURI

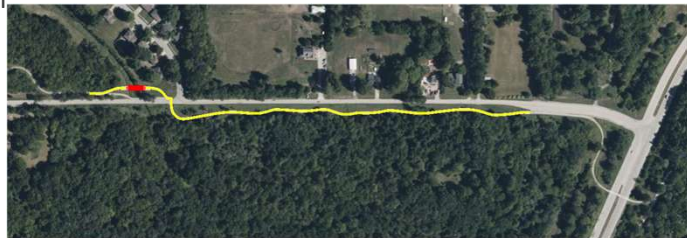
- Project Description: Construct a 10-foot wide asphalt trail on Sni-A-Bar Blvd from Buckner Tarsney Road to the traffic circle on Cross Creek Drive. Expand the existing 4-foot concrete sidewalk on Cross Creek Drive north to the existing trail head parking lot to an 8-foot trail. All within existing right of way separated from the motorized traffic. Project connects Regional Bikeway Plan to Metro Green.
- Total TAP Request: \$401,150
- Total CMAQ Request: \$0
- Total Match: \$175,290
- Phaseable/Scalable: Yes, by removing the sidewalk expansion along Cross Creek, which connects to the Trail Head parking lot and ultimately connects to the schools



21

City of Grandview, MO

- Project description: This project will improve approx. 0.5 mile of Harry S Truman trail with a 10 ft wide concrete multi-use path and restoration and installation of the Bailey bridge as a pedestrian bridge.
- Total TAP request: \$665,000
- Total CMAQ request: \$0
- Total match: \$356,000
- Phaseable/Scalable: This project could be divided into two phases, east part and west part at the crossing.

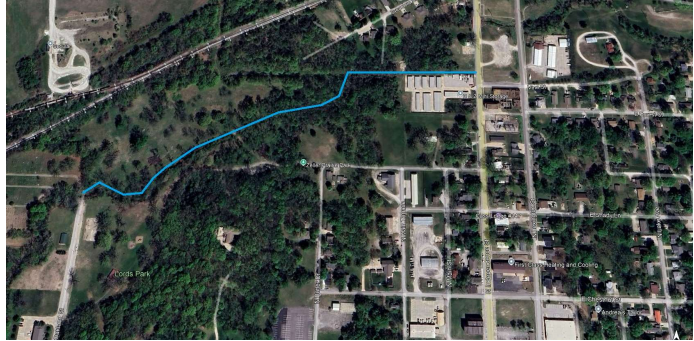


22

City of Harrisonville

Town creek trail

- **Project description:** This phase of the Town Creek Trail System will establish a 10-foot-wide paved recreational path, spanning 1.4 miles between Independence Street and Oakland Street. The trail will link Lords Park, Zeller Park, and City Park, creating a seamless connection between these key areas. By offering a safe route for pedestrians and cyclists to access local parks and the trail supports active transportation and encourages healthy lifestyles.
- **Total TAP request:** \$450,000
- **Total CMAQ request:** None
- **Total match:** \$50,000
- **Phaseable/Scalable:** No



23

City of Harrisonville

Harrisonville hwy 7 entry sign


- **Project description:** To enhance and beautify a portion of private property constructing an entry marker monument sign with shrubs, deciduous and evergreen trees and illustrating "Harrisonville", in the general vicinity of the City's northern boundary on MO Hwy 7.
- **Total TAP request:** \$80,000
- **Total CMAQ request:** None
- **Total match:** \$20,000
- **Phaseable/Scalable:** None



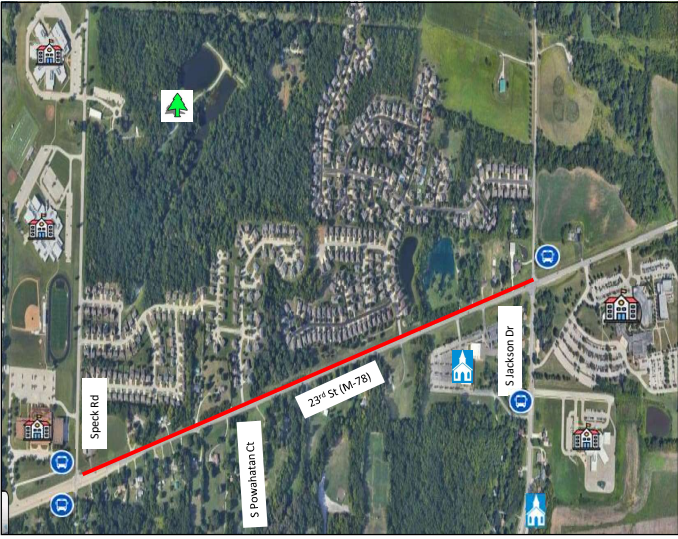
24

City of Independence

23rd St (M-78) Sidewalks – Speck Rd. to Jackson Drive




- Project description: Project will construct new ADA compliant sidewalks and ramps on both sides of 23rd St from Speck Rd. to Jackson Drive, along with pedestrian & traffic signal upgrades, transit stop improvements, and green infrastructure. Currently, this section of the corridor only serves motor vehicles, and no sidewalk facilities are available to accommodate pedestrian & transit users.
- Total TAP request: \$1,191,270
- Total CMAQ request: \$0
- Total match: \$893,453
- Phaseable/Scalable: Yes; It can be split into 2 phases
 - Phase 1: Speck Rd to S Powahatan Ct (0.39 miles)
 - Phase 2: S Powahatan Ct to Jackson Drive (0.67 miles)



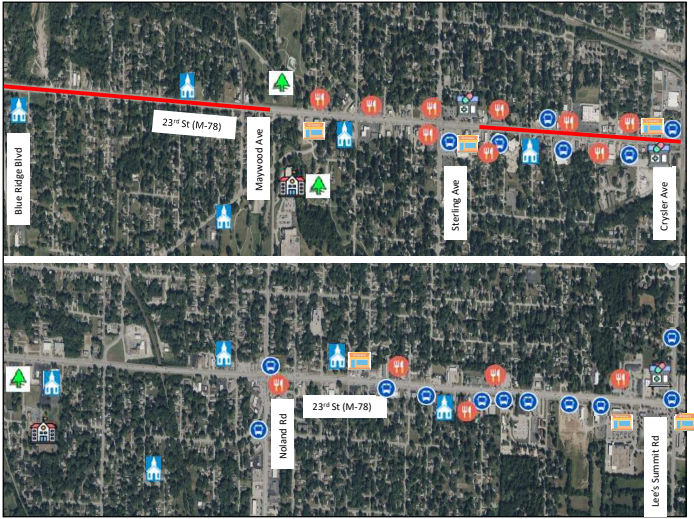
25

City of Independence

23rd St (M-78) Mobility & Safety Improvement Project



- Project description: This project will provide complete streets improvements along 23rd St from Blue Ridge Blvd to Lee's Summit Road. The project will enhance pedestrian accessibility and safety through the addition of new ADA complaint sidewalks, repair/replacement of existing sidewalks, provide multimodal transportation options by adding bike lanes and improving access to transit stops along the corridor, and improving overall access management.
- Total TAP request: \$1,500,000
- Total CMAQ request: \$1,000,000
- Total match: \$5,000,000 (Total TAP/CMAQ match: \$800K)
- Phaseable/Scalable: Yes; It can be split into 5 phases
 - Phase 1: Blue Ridge Blvd to Maywood Ave (0.74 miles)
 - Phase 2: Maywood Ave to Sterling Ave(0.60 miles)
 - Phase 3: Sterling Ave to Crysler Ave (0.74 miles)
 - Phase 4: Crysler Ave to Noland Rd (0.99 miles)
 - Phase 5: Noland Rd to Lee's Summit Rd (1.25 miles)



26

City of Kansas City, Missouri - Parks & Recreation Department

- Project description: Swope Park Blue River Trail-Lagoon Area to Swope Dog Park. 1.5-mile-long segment of 10' wide concrete trail along the Blue River. Part of the long-term 43-mile Blue River Greenway plan and a missing trail link through Swope Park. A new segment is currently funded from 63rd Street to the Swope Pool. The segment in this application would connect the funded trail at the Swope Pool area and Lagoon to a trail along Gregory Blvd. east of the Blue River Bridge.
- Total TAP request: \$1,500,000
- Total CMAQ request: \$0
- Total match: \$500,000
- Phaseable/Scalable: No; This project is already scaled into a relatively short trail segment. Further reduction could mean less economies of scale for design and construction work, resulting in a higher cost per linear foot.



27

Public Works Dept. KC, MO

- Project description: Trolley Track Trail Bridge – This project will reconstruct the deteriorating Trolley Track Bridge, a key link between northbound and southbound Wornall at W 69th St in Kansas City, MO. Falling materials from the structure pose safety risks to pedestrians and cyclists. Replacing The Trolley Track Trail, part of the MARC Regional Bikeway and Bike KC plan will ensure continued trail access and maintain connections to public amenities. The project also includes trail repairs and facility integration.
- Total TAP request: \$864,000
- Total CMAQ request: \$0
- Total match: \$864,000
- Phaseable/Scalable: No; Phasing the bridge construction would not be economically feasible.



28

City of Kearney, Missouri

INTEGRITY • COMPASSION • SERVICE • TEAMWORK

- Project description:
Kearney Pathways
- Total TAP request:
\$1,500,000
- Total match:
\$1,278,000
- Scalable: Yes
Reduce
Segments

Use Tax - Pathways (Sidewalk/Trails Project)
City of Kearney, MO

Priority 1

Priority 2

Priority 3

29

CITY OF LAWSON SIDEWALK MASTER PLAN PHASE 4

- Project description: Continuation of Master plan – Salem Road Extension is now funded also, Dollar General recently relocated from downtown moving this phase up the list of priorities. DG is the only source of groceries that citizens have in our community. Connecting to the Salem Road Sidewalk allows the south part of town to reach the D Hwy and other phases completed with TAP funds.
- Total TAP request: \$679,200
- Total match: \$169,800
- IS PHASEABLE – The goal is to reach Dollar General, but if we did half, it would connect with Salem Road Extension Project

30

Lee's Summit – SE Douglas Street

- **Project description:**
This project transitions Douglas St, between Blue Parkway and 4th St into a multi-modal corridor to downtown Lee's Summit, Lee's Summit High School, and the proposed Pro Deo Youth Center. Improvements will include complete street amenities with new, continuous 5' sidewalks on both sides, ADA improvements, share the road bike facilities, and continuous lighting. In addition to complete street improvements, the project will replace/improve the failing roadway and inadequate stormwater infrastructure.
- **Project need:** To provide new, safe, multimodal accommodations, repair existing infrastructure and further local initiatives like the Downtown Master Plan, Ignite Comprehensive Plan, and Livable Streets Policy.
- **TAP Funding Request:** \$1,500,000
- **Total Match Amount:** \$3,500,000
- **Project Priority:** 1 of 1
- **Scalability:** The project has been reduced in scale by phasing larger projects. This project has already been phased with sidewalk connections to the US 50 and M-291 North Interchange project fronting Lee's Summit High School

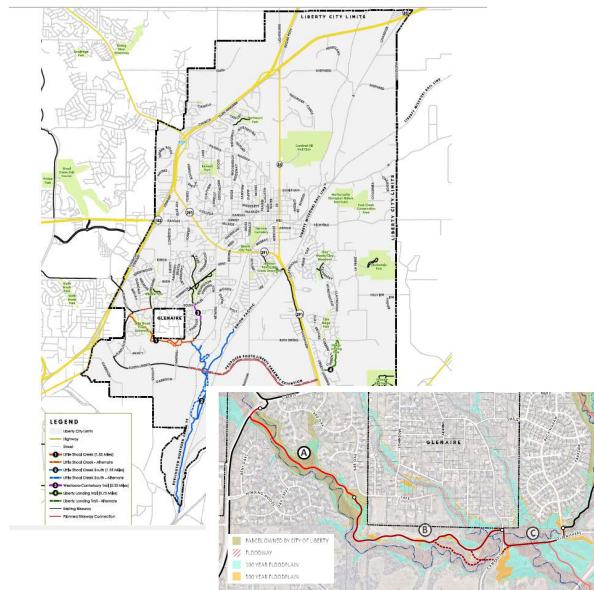


31



Liberty, MO Parks & Rec Department

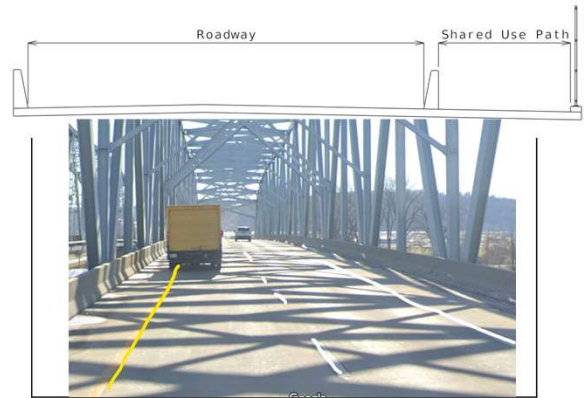
- **Project description:** This project will complete Little Shoal Creek Trail connecting N. Flintlock Rd. to Campbell Dr. adding 1.3 miles of trail in Liberty, MO. It will connect users from Liberty, Glenaire, Pleasant Valley and KCMO to housing, schools, food, jobs and desirable amenities in each of the four municipalities. It will also connect to an additional 2.7 miles of trails, creating a 4 mile trail system for pedestrians and bicyclists.
- Total TAP request: \$1,000,000
- Total CMAQ request: \$0
- Total match: \$490,750
- **Phaseable/Scalable:** Yes. Our plans split this trail into three segments; A, B & C. We have completed segment C and request funding to complete A & B. However, this project could be phased to complete just A or B.



32

MoDOT

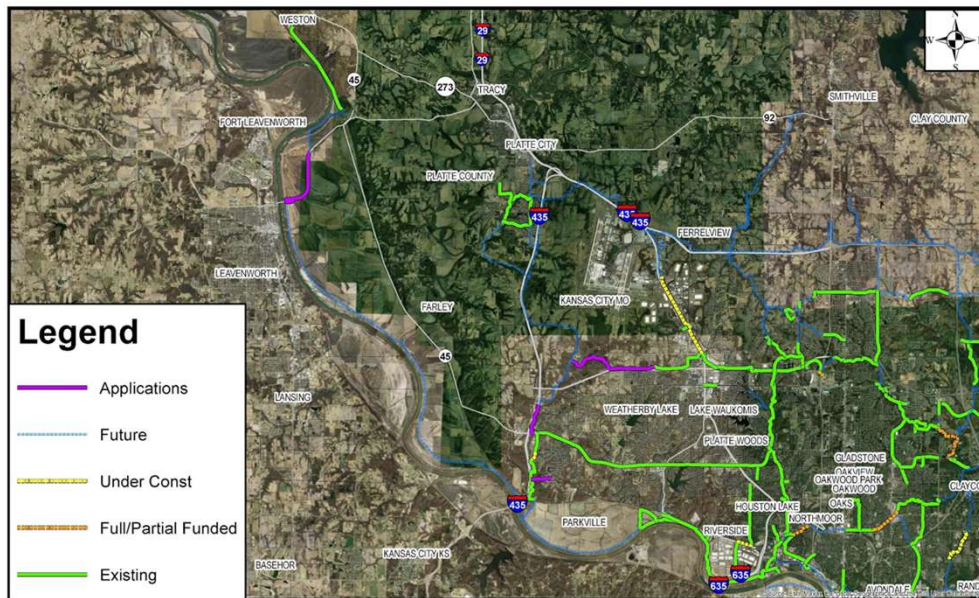
- Project description: Add a shared use path to Rte 291 NB bridge over Missouri River.
- Total TAP request: \$1000,000
- Total CMAQ request: \$ 1000,000
- Total match: \$ 7000,000
- Phaseable/Scalable: Yes



33



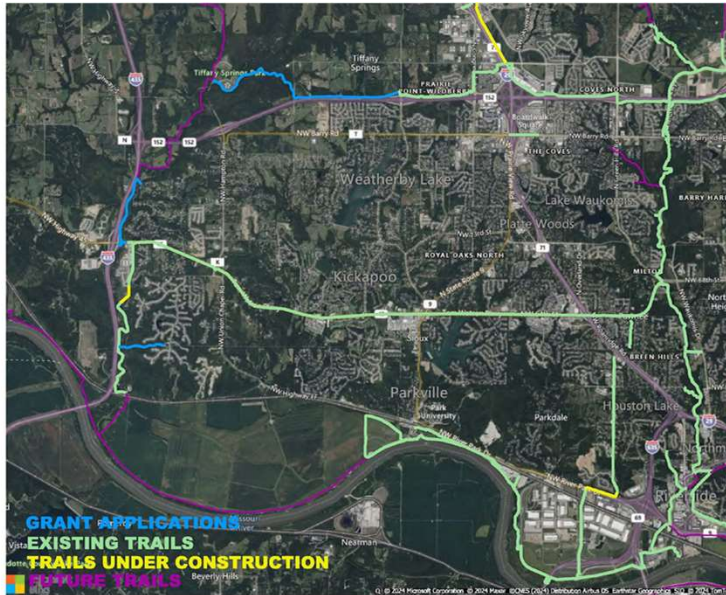
Platte County 2024 TAP Grants



34



Platte County 2024 TAP Grants



35



Platte County 2014 TAP Grants

Project description: Route 152 Trail Segment 1

- Total TAP request: \$1,500,000
- Total CMAQ request: \$2,750,000
- Total CRP request: \$2,750,000
- Total match: \$695,000
- Phaseable/Scalable: No, logical termini do not exist as it completes a gap between two arterials



36



Platte County 2014 TAP Grants

Project description: Route 152 Trail Segment 2

- Total TAP request: \$1,500,000
- Total CMAQ request: \$2,750,000
- Total CRP request: \$2,750,000
- Total match: \$695,000
- Phaseable/Scalable: No, logical termini do not exist as it completes a gap between two arterials



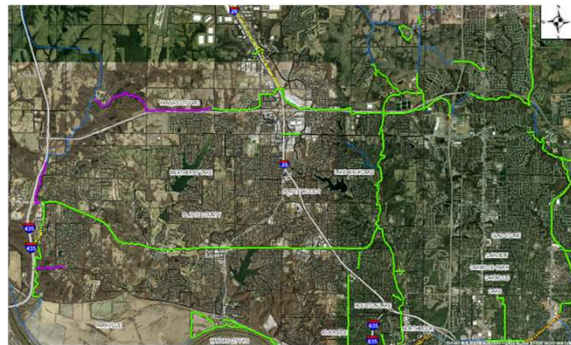
37



Platte County 2014 TAP Grants

Project description: Route 152 Trail Completion

- Total TAP request: \$1,500,000
- Total CMAQ request: \$5,400,000
- Total CRP request: \$5,400,000
- Total match: \$1,389,000
- Phaseable/Scalable: Yes, project was submitted in two separate segments for TAP and as a whole for CMAQ and CRP



38



Platte County 2014 TAP Grants

Project description: Brush Creek North Segment 1 (Blue Line)

- Total TAP request: \$1,500,000
- Total CMAQ request: \$0
- Total CRP request: \$1,500,000
- Total match: \$513,000
- Phaseable/Scalable: No, logical termini do not exist as it completes a gap between two arterials



39



Platte County 2014 TAP Grants

Project description: Brush Creek 1000 Oaks Connector (Teal Line)

- Total TAP request: \$1,030,000
- Total CMAQ request: \$0
- Total CRP request: \$0
- Total match: \$251,000
- Phaseable/Scalable: Yes, County could provide additional match



40



Platte County 2014 TAP Grants

Project description: NW 76th Street Bridge/Brush Creek Connector (Orange Line)

- Total TAP request: \$1,500,000
- Total CMAQ request: \$0
- Total STBG request: \$2,100,000
- Total CRP request: \$0
- Total match: \$558,000
- Phaseable/Scalable: Yes, County could provide additional match



41



Platte County 2014 TAP Grants

Project description: Leavenworth-Weston Bluff Connector Segment 1

- Total TAP request: \$1,500,000
- Total CMAQ request: \$0
- Total CRP request: \$0
- Total match: \$386,800
- Phaseable/Scalable: Yes, project could be split in half



42



Platte County 2014 TAP Grants

Project description: Leavenworth-Weston Bluff Connector Segment 2

- Total TAP request: \$1,500,000
- Total CMAQ request: \$0
- Total CRP request: \$0
- Total match: \$859,000
- Phaseable/Scalable: Yes, project could be split in half



43

City of Pleasant Hill, MO

Lexington Road Sidewalk Project

Installation of an ADA compliant sidewalk that will connect four schools, multiple neighborhoods, and create retail corridors. The proposed sidewalk on Lexington Road will span from College Hill Street to 163rd Street connecting one side of the community to the other. The addition of this sidewalk positively impacts our community by tying into the City's Bike Master Plan, provides a safer environment for pedestrian traffic and allows for whole community use.

Total TAP Request: \$1.33M

Total CMAQ Request: \$0

Total Match: 20% share - \$332,600 / Total - \$580,904

Phaseable/Scalable:

Yes, this project is scalable. There are only reduced limits on the North end of the project near 163rd Street.



44

City of Raytown, MO 53rd Street Rock Island Trail Connection

- Project description: **10' shared-use path** connecting to Rock Island Trail and addition of **pedestrian signal** at Raytown Road.
- Project need: Safe multimodal connections between Rock Island Trail and new park under construction.
- Total STBG-MO funding request: \$977,600
- Total match amount: \$422,400 (30%)
- Other funding applied for: STBG / TAP
- Project Priority: 2nd

45

- Total TAP request: \$1,500,000
- Total STP request: \$1,904,000
- Total match: \$851,000
- Phaseable/Scalable:
Yes, pedestrian bridge could be removed in a 1st phase.

City of Riverside

- 1st phase of PSP Missouri River North Trail (MRNT).
- Connects Riverside, Kansas City and North Kansas City.
- Provides bike/ped access to downtown Kansas City
- Helps complete another MetroGreen segment.
- Connects to the Riverway Blvd shared use path scheduled for construction in 2025.
- Incorporates green infrastructure to mitigate environmental impacts.

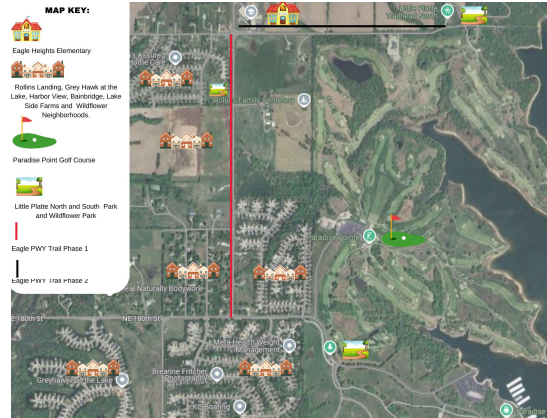
46

City of Smithville

Project Description:

The Eagle Parkway Trail project is aimed at establishing a trail network within Smithville's Eagle Parkway area. Spanning a total distance of 2 miles upon completion, the project is divided into two phases. Phase 1 will cover a mile-long segment from 180th St to 188th St, while Phase 2 will extend from 188th St to Little Platte North Park. The construction of a 10-foot-wide multi-use concrete path provides pedestrians and cyclists with a safe and accessible route to navigate the area. This trail will not only connect existing pathways but also facilitate access to key community destinations, including Eagle Heights Elementary School, three park systems, Smithville Lake, Paradise Golf Course, and six neighborhoods.

- **Total TAP Request:** \$1,500,000
- **Total CMAQ Request:** \$0
- **Total Match:** \$500,000
- **Phase/Scalable:** Yes, the project is divided into two phases. Phase 1 will cover a mile-long segment from 180th St to 188th St, while Phase 2 will extend from 188th St to Little Platte North Park.



47

MAPLE ELEMENTARY SCHOOL

MAPLE LANE SIDEWALK project

Total TAP Requested: \$480,000
 Total CMAQ Requested: \$0
 Total Match: \$120,000
 Phaseable/Scalable: No

BEFORE

1

2

Project Description:
 The project will construct 1500 feet of 5-foot-wide sidewalk on Maple Lane from Pine Street to Maple Avenue. A Pedestrian crossing with flashing beacons will be installed for safe crossing to the school on Maple Avenue.

3

AFTER

48

Adjournment

Next meeting: Wednesday, September 25, 10:30 a.m. – special meeting for project presentations