



**KANSAS CITY
MISSOURI**

NORTH
KANSAS CITY
Virtually Urban. Supremely Suburban.

CITY OF
RIVERSIDE
MISSOURI

MARC
MID-AMERICA REGIONAL COUNCIL

Missouri River North Trail Plan

Public Meeting #1

January 17, 2024

5:30 to 7 p.m

Today's Meeting

What we're here for

Why make this trail connection

Opportunities and considerations

Questions and answers

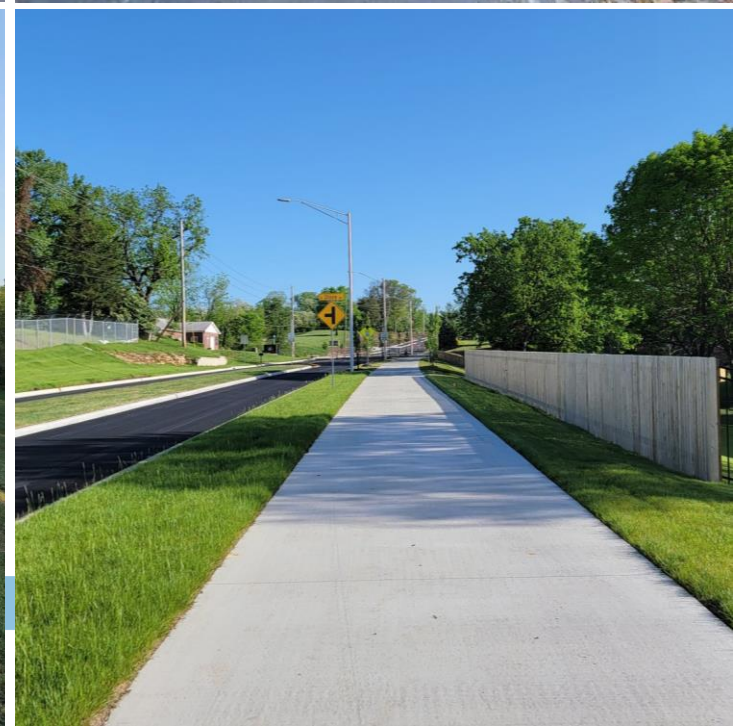
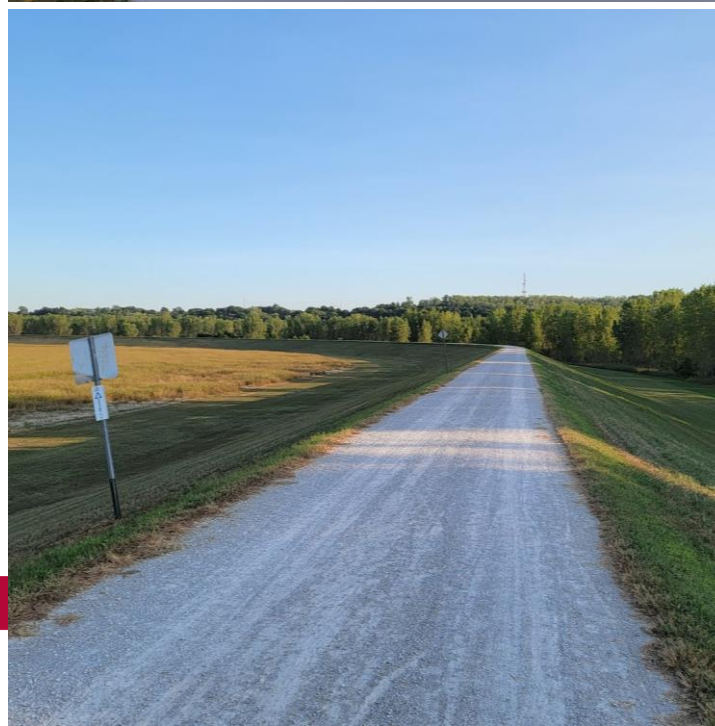
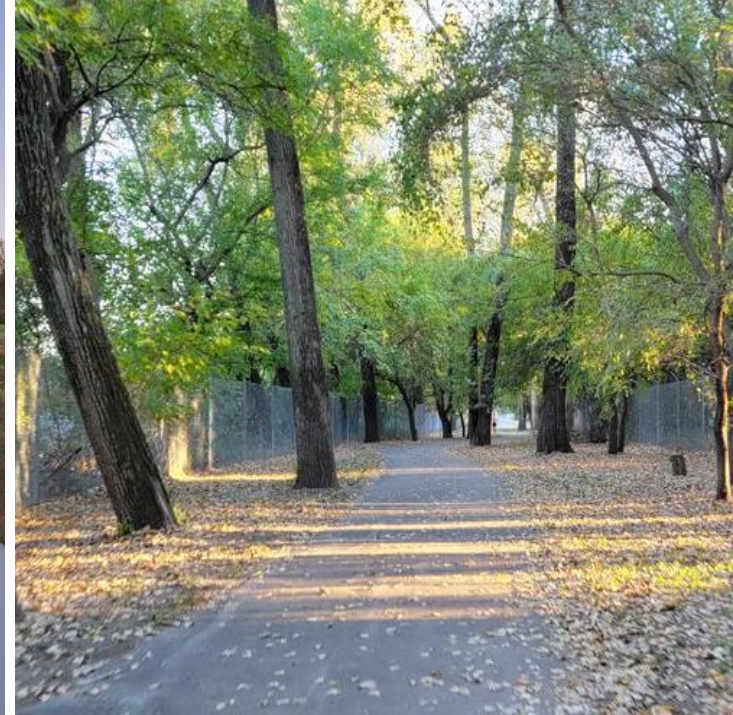


What we're here for

Project Overview

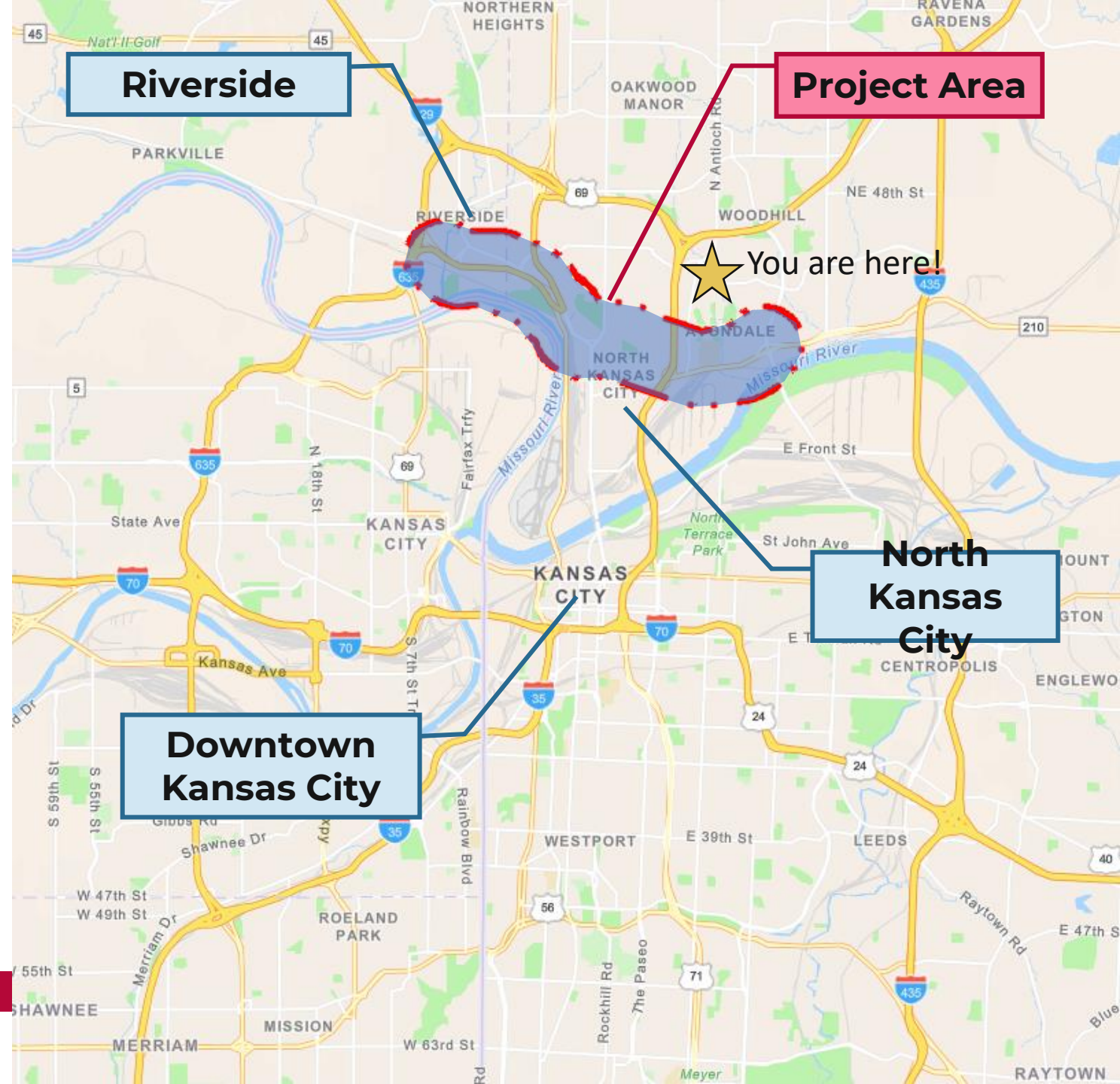
Project Overview

- Provide the final link connecting the existing Northland trail system
- Connect through Riverside, North Kansas City, Kansas City
- Connect trails:
 - Line Creek Trail
 - Interurban Trail
 - North Oak Trail
 - Armour Road Cycle Track
 - Future Burlington Cycle Track
 - Chouteau Trail

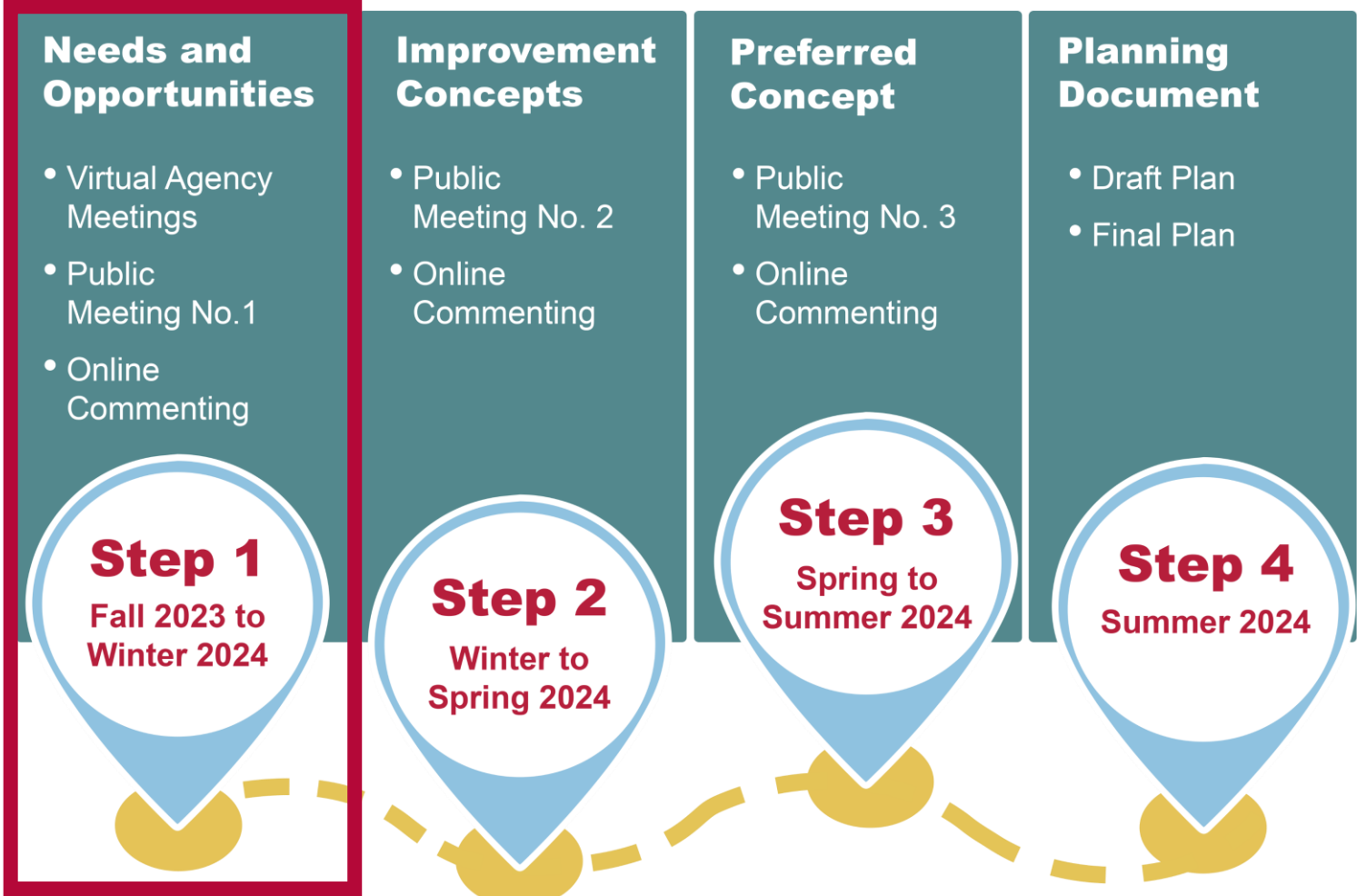


Project Area

- North of the Missouri River
- Connecting areas of:
 - Riverside
 - North Kansas City
 - Kansas City



Process & Schedule



Why make this trail connection

Project Importance

Importance of Project

- Aligns with goals in all 3 communities
 - **KCMO Spirit Playbook**
 - **NKC Bike Master Plan**
 - **Riverside Master Plan**
- Follows millions of dollars and dozens of miles in existing trail + bike facility development
- Connects across the Northland (east-west) and the Northland to Downtown
- The missing link that unlocks massive walking & biking trip potential for the region



Bike Ridership Target

Short Term (5 - year)

1% bicycle-mode share 2.5% adults biking daily

Medium Term (10 - year)

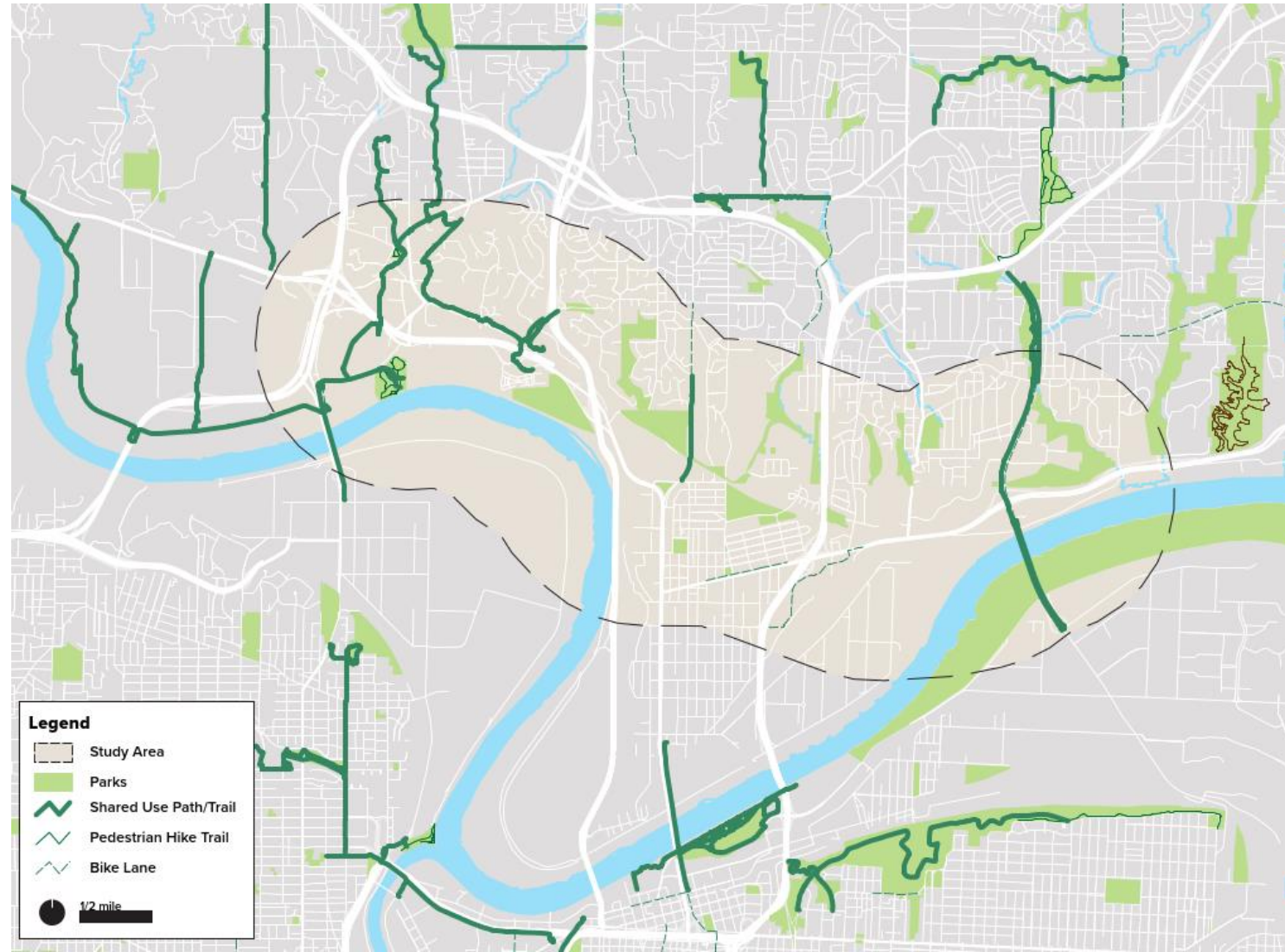
2.5% bicycle-mode share 6% adults biking daily

Long Term (20 - year)

6% bicycle-mode share 15% adults biking daily

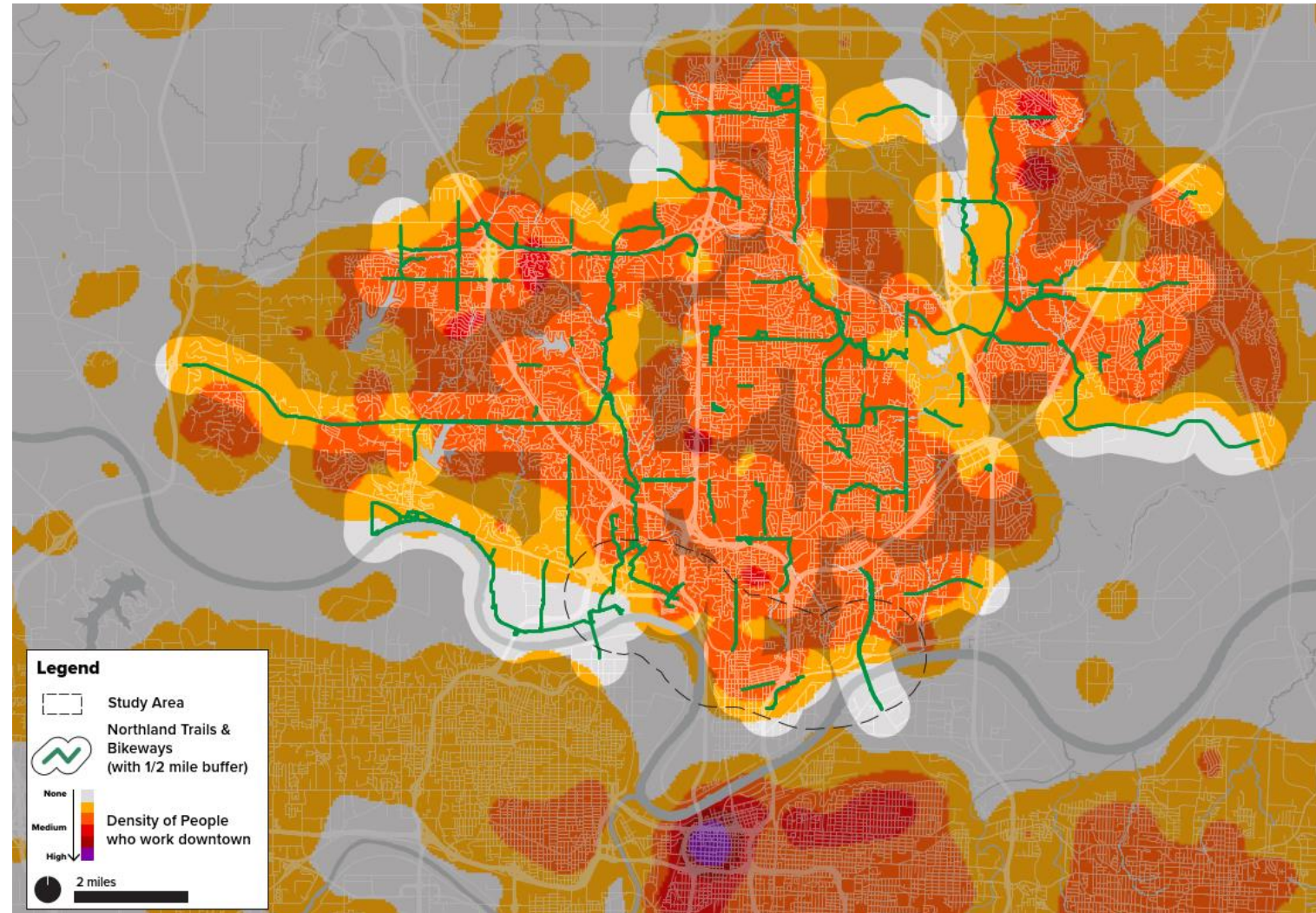
Connecting to Trails & Parks

- **106 miles of trails** and protected bicycle facilities in Northland
- **33 miles of trails** and protected bicycle facilities
- **570 acres of parks**
- Connecting gaps will unlock a broader network of transportation and recreation amenities for the Northland



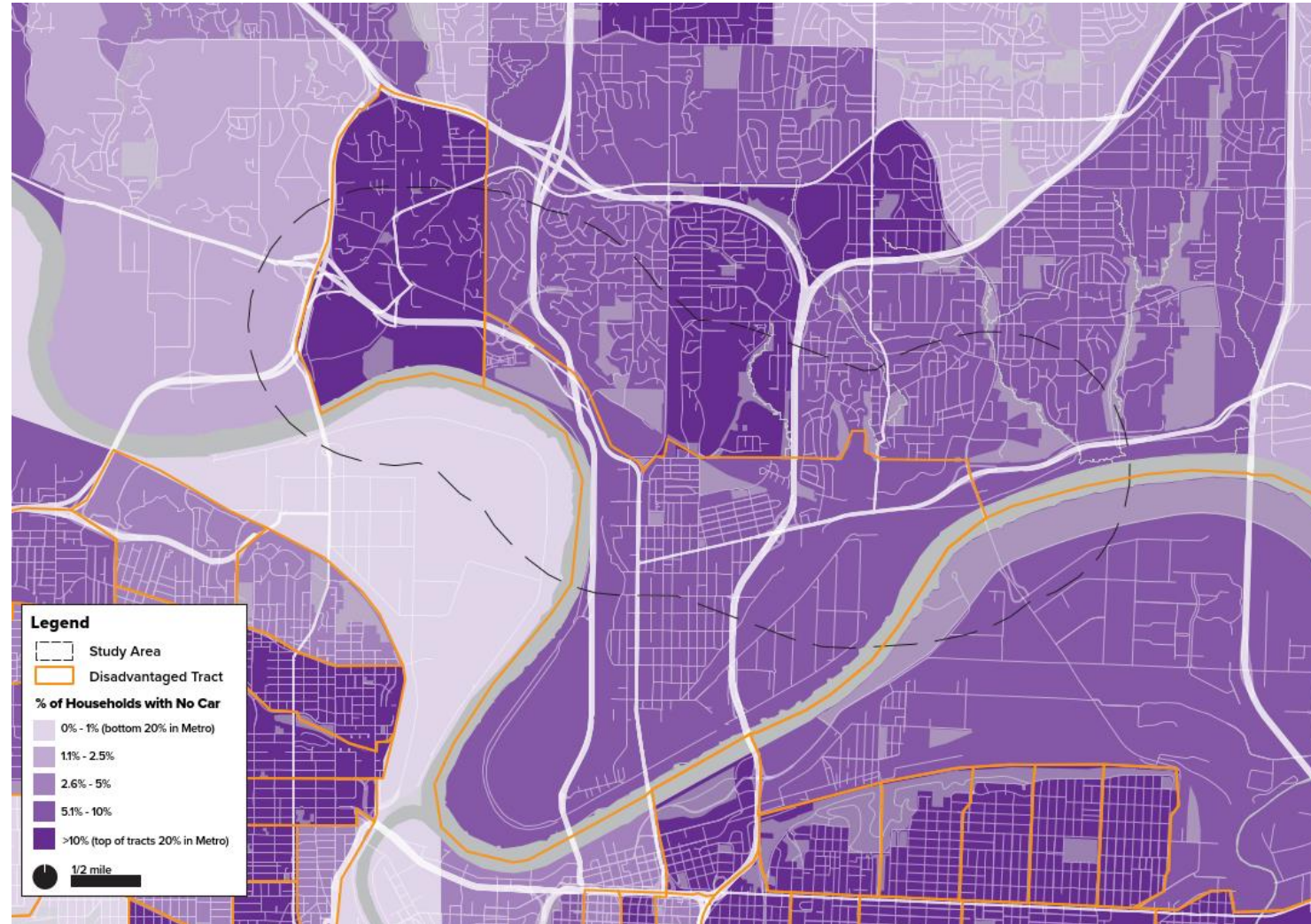
Connecting to Jobs

- **10,000 downtown Kansas City workers** live within ½ mile of the Northland trails
- **90,000 jobs and 93,000 workers** located within ½ mile of Northland trails
- Connecting gaps in these trails can make bicycling a viable commute choice for more workers.



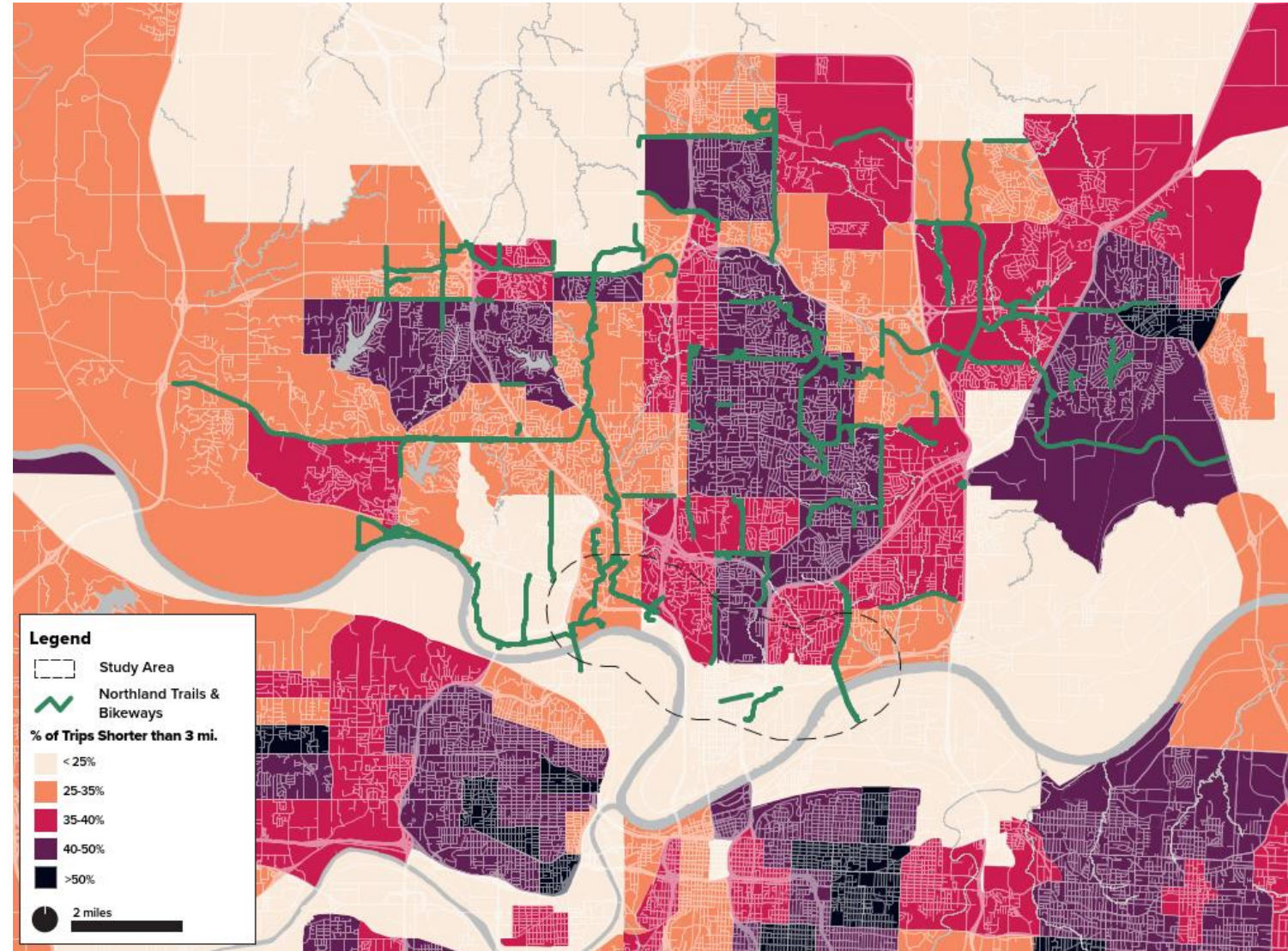
Multimodal Options

- **9% of households in the study area don't have a car**
- Trails and bicycle facilities can help extend the impact of public transit and provide a vital link to people who don't have the option of driving.



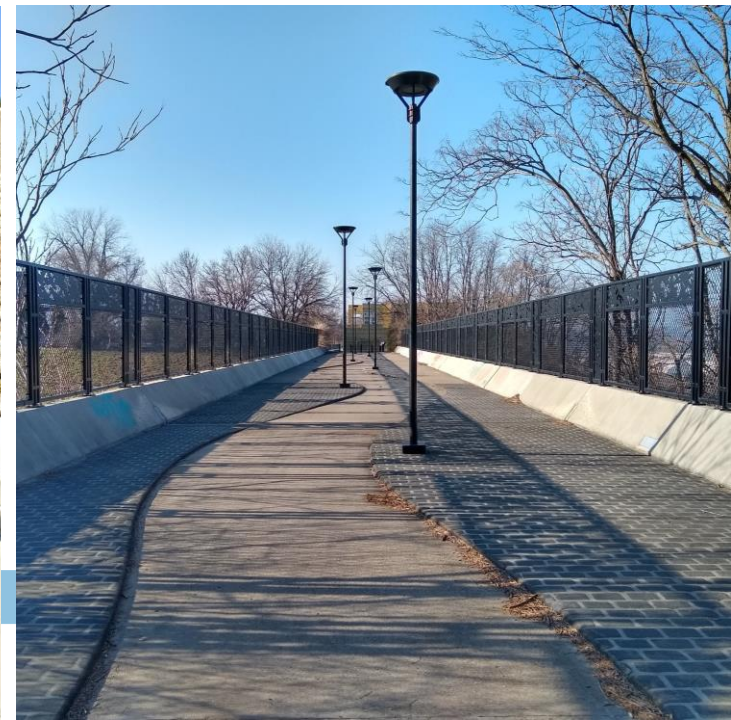
Completing Trips

- **40% of trips in our study area are 3 miles or shorter**
- By providing safe and convenient options for walking and biking, people will feel more encouraged to reduce driving and increase their physical activity.



Project Goal

- Plan high-quality trail connections that:
 - Provide recreational opportunity
 - Connect residents to parks and amenities
 - Connect residents to large employers
 - Provide multimodal transportation options



Opportunities and Considerations

Project Area Overview

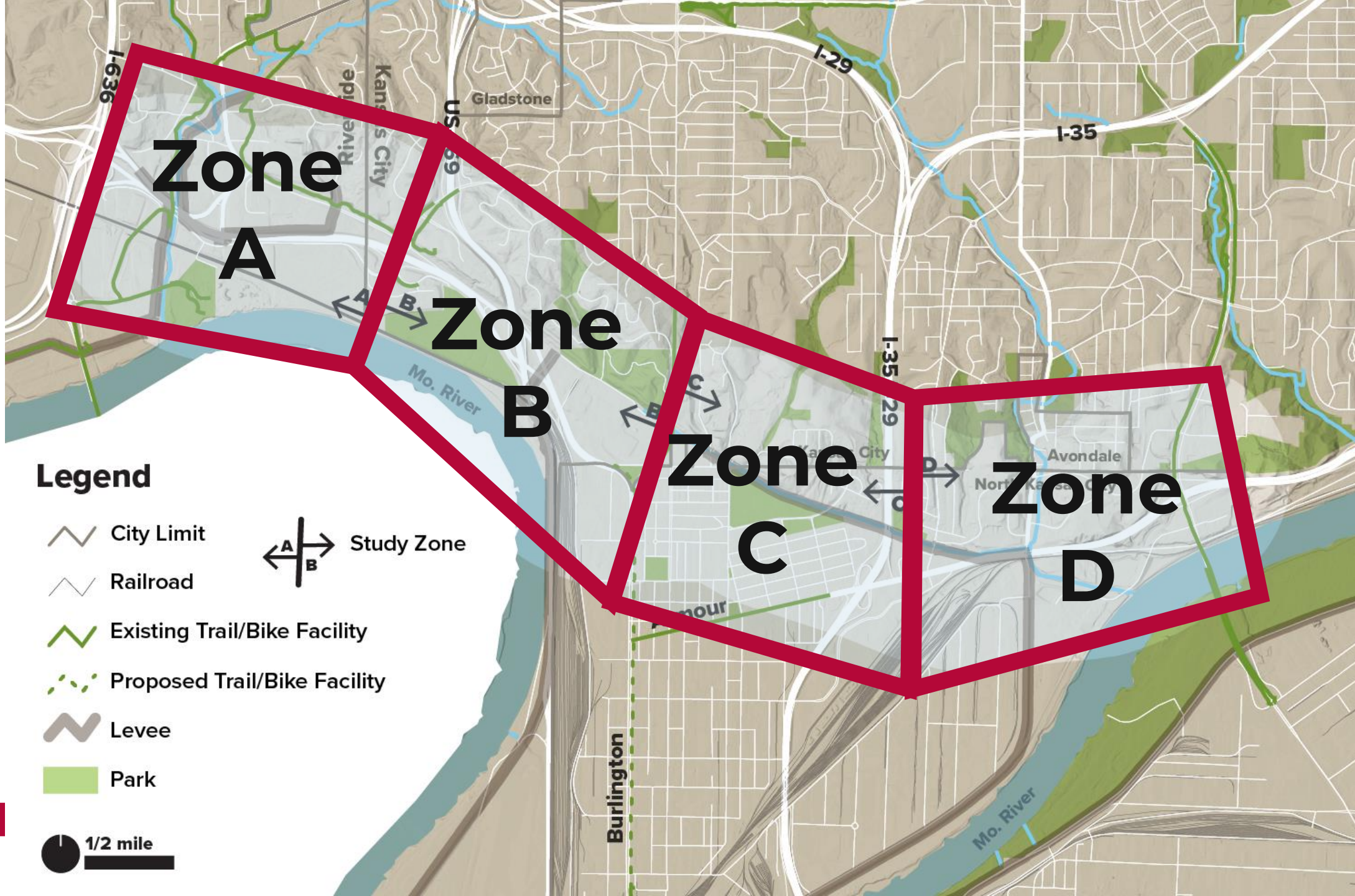


Legend

- City Limit
 - Railroad
 - Existing Trail/Bike Facility
 - Proposed Trail/Bike Facility
 - Levee
 - Park
- Study Zone

1/2 mile





**Zone
A**

**Zone
B**

**Zone
C**

**Zone
D**

Legend

City Limit

Railroad

Existing Trail/Bike Facility

Proposed Trail/Bike Facility

Levee

Park

Study Zone

1/2 mile





**Zone
A**

Legend

-  City Limit
 -  Railroad
 -  Existing Trail/Bike Facility
 -  Proposed Trail/Bike Facility
 -  Levee
 -  Park
 - 
 -  1/2 mile
- 

Study Zone



1/2 mile



Connection Opportunities



Downtown Riverside

Interurban Trail

Line Creek Trail

EH Young Park

Waterwell Park

1/4 mile

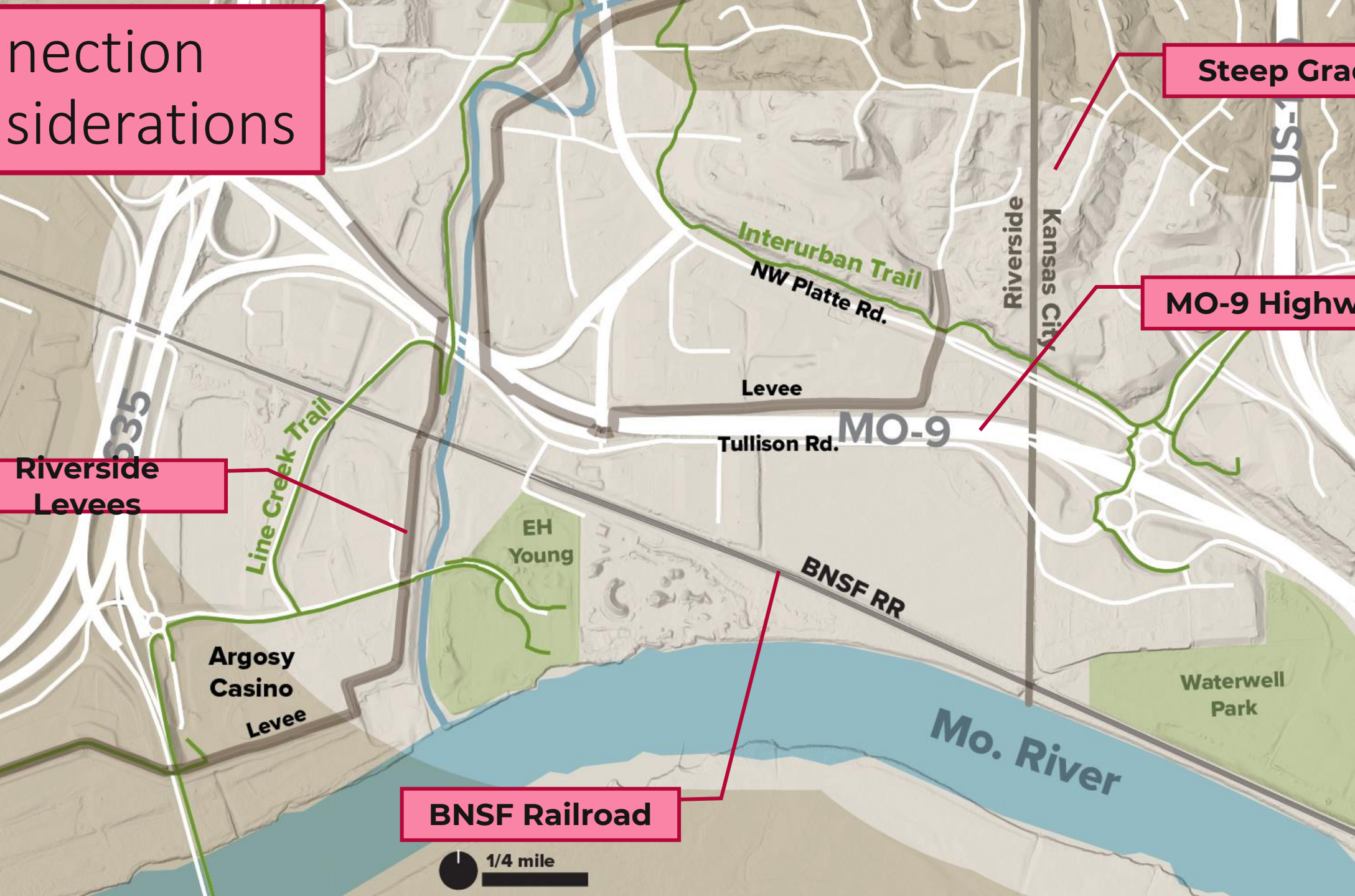
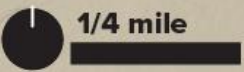
Connection Considerations

Steep Grades

MO-9 Highway

Riverside Levees

BNSF Railroad





Legend

-  City Limit
-  Railroad
-  Existing Trail/Bike Facility
-  Proposed Trail/Bike Facility
-  Levee
-  Park



 1/2 mile



Connection Opportunities

Interurban Trail

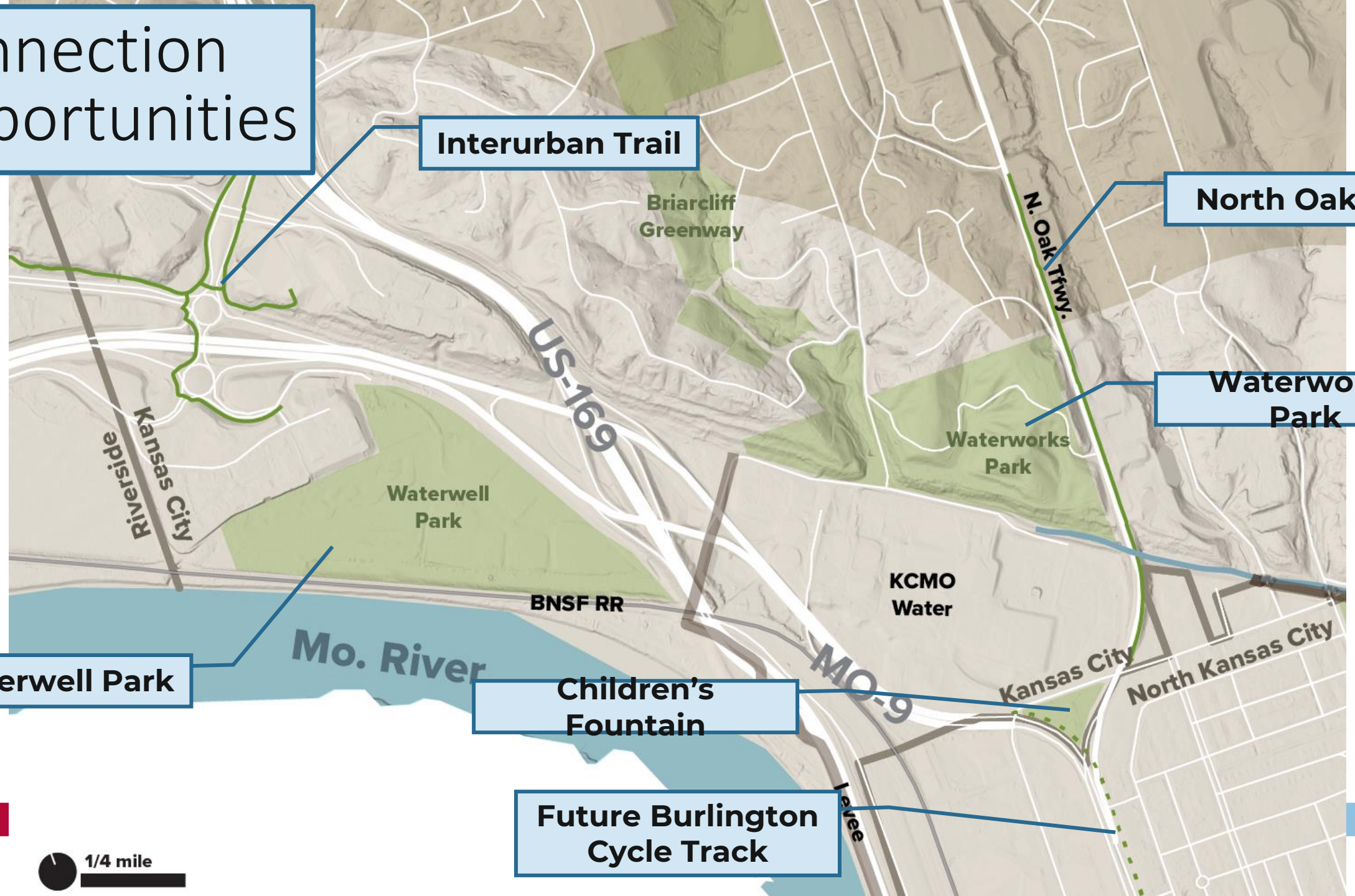
North Oak Trail

Waterworks Park

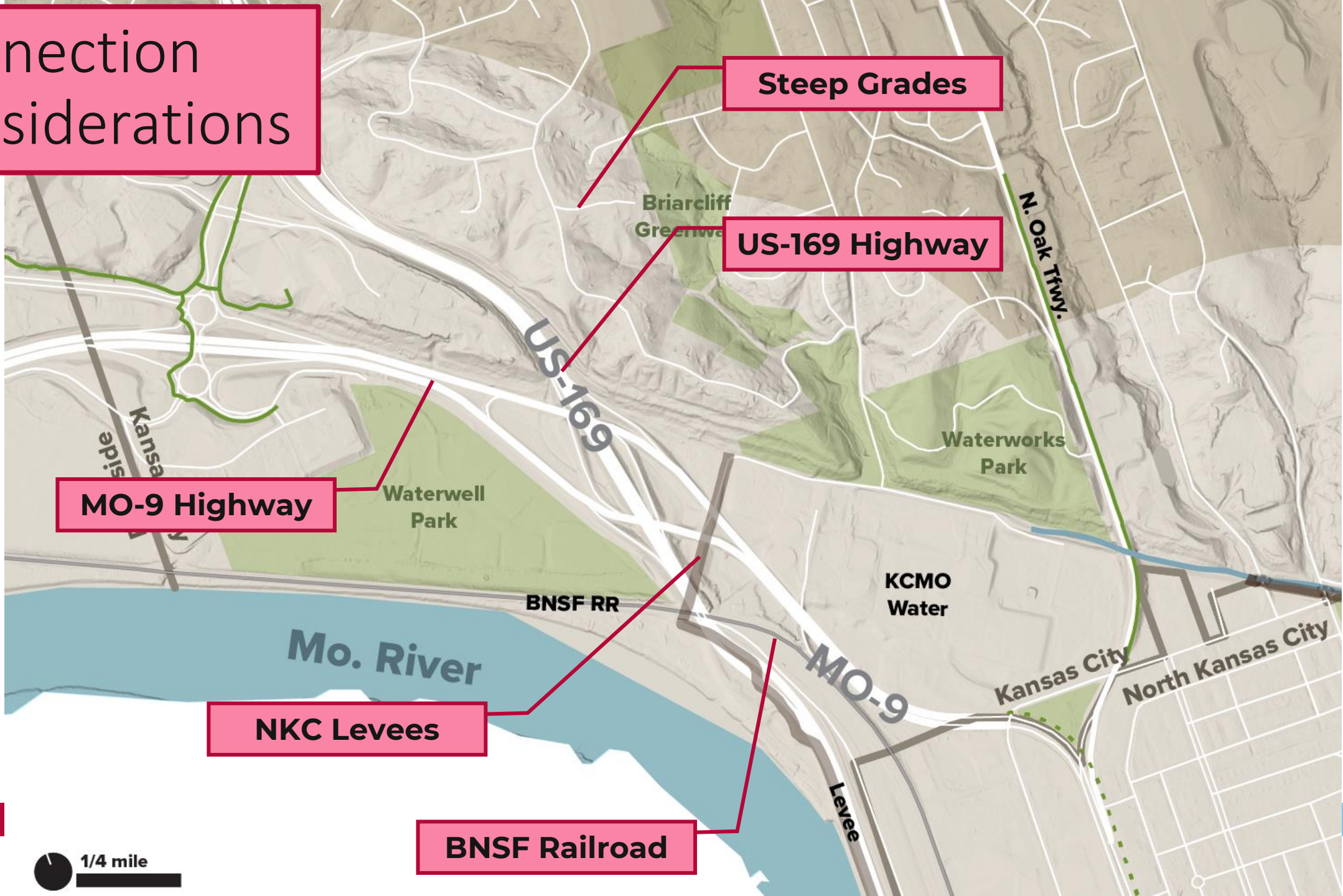
Waterwell Park

Children's Fountain

Future Burlington Cycle Track



Connection Considerations



Steep Grades

US-169 Highway

MO-9 Highway

NKC Levees

BNSF Railroad





Legend

- City Limit
 - Railroad
 - Existing Trail/Bike Facility
 - Proposed Trail/Bike Facility
 - Levee
 - Park
- Study Zone

1/2 mile



Connection Opportunities

North Oak Trail

Macken Park

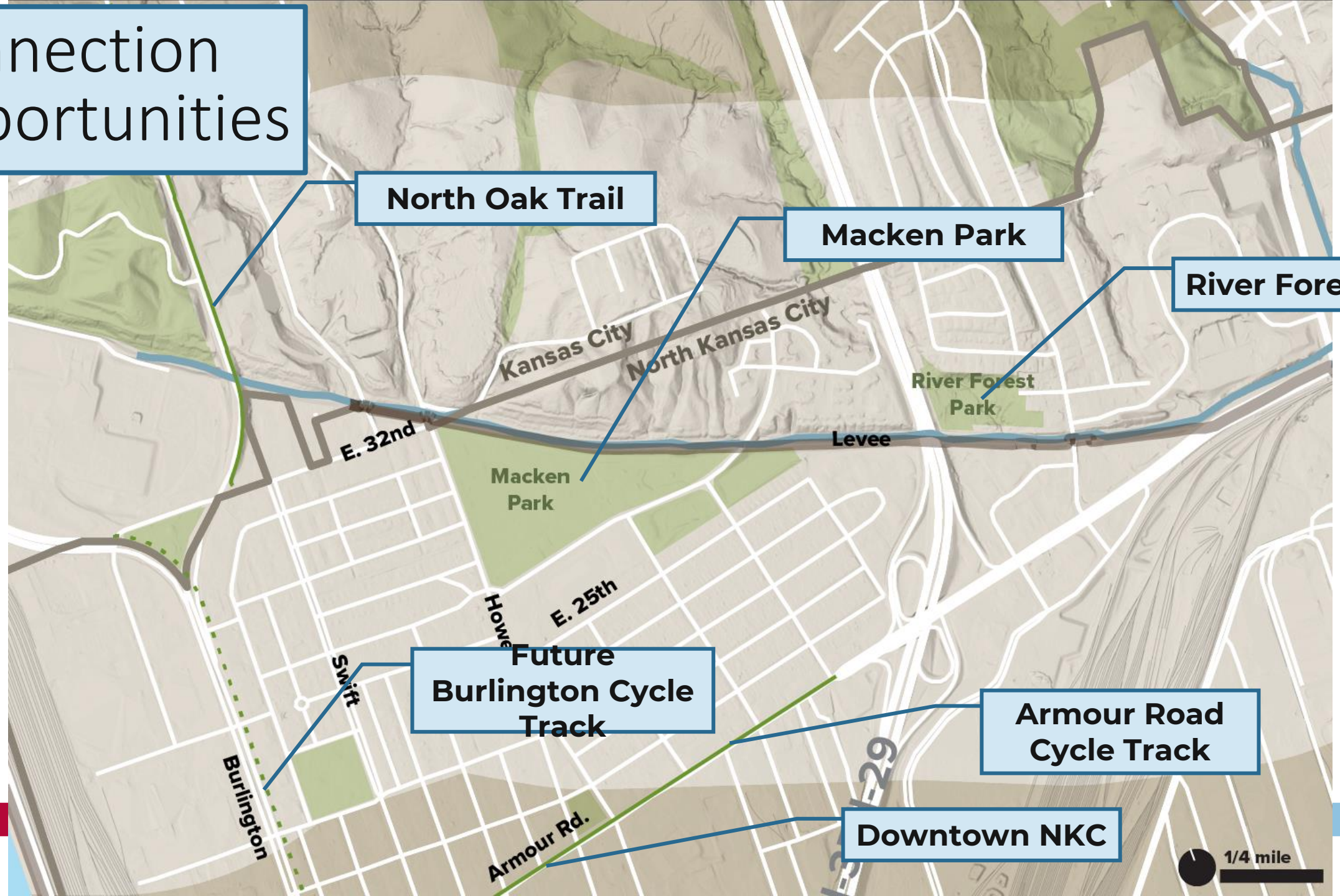
River Forest Park

Future Burlington Cycle Track

Armour Road Cycle Track

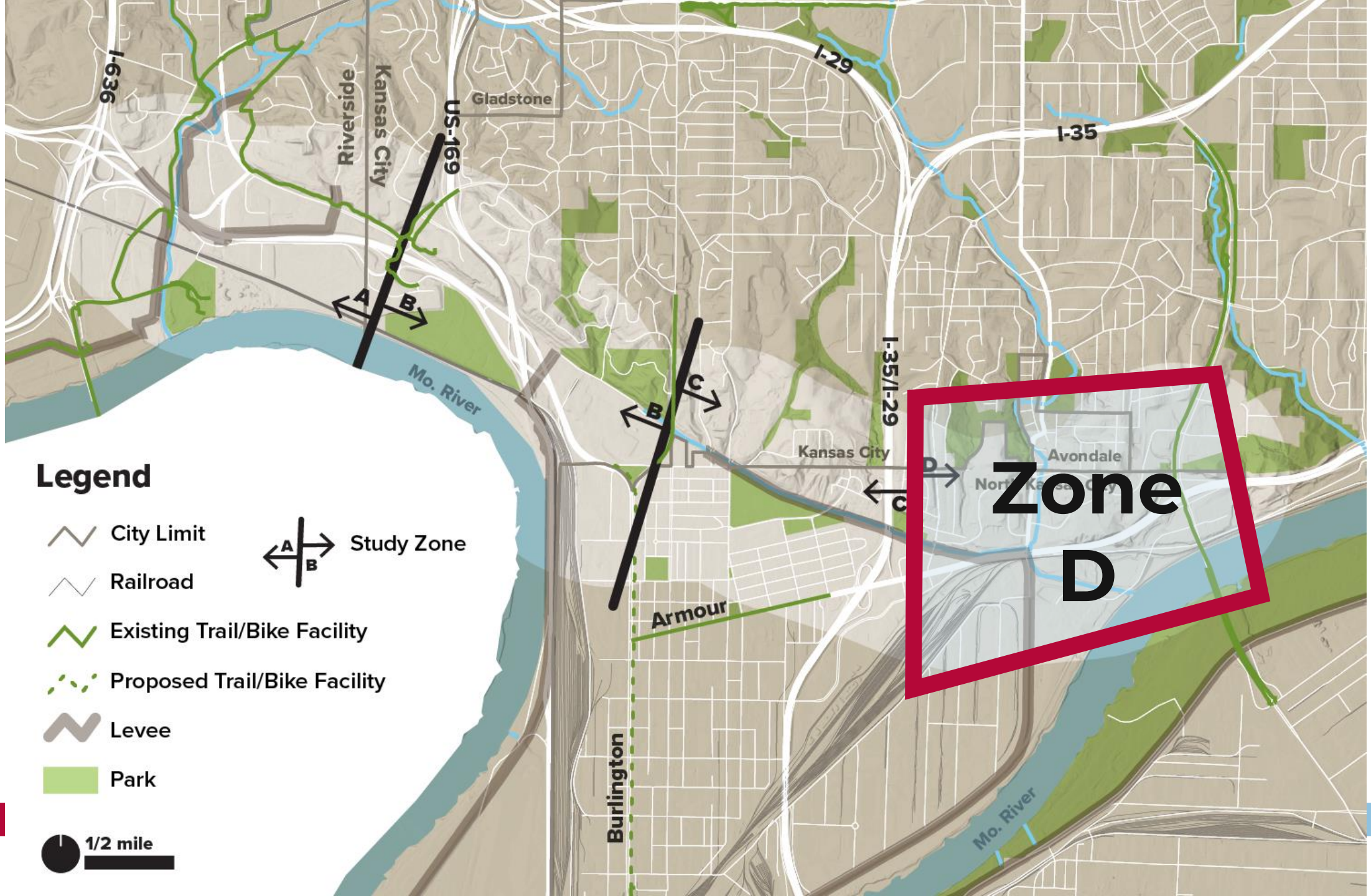
Downtown NKC

1/4 mile



Connection Considerations





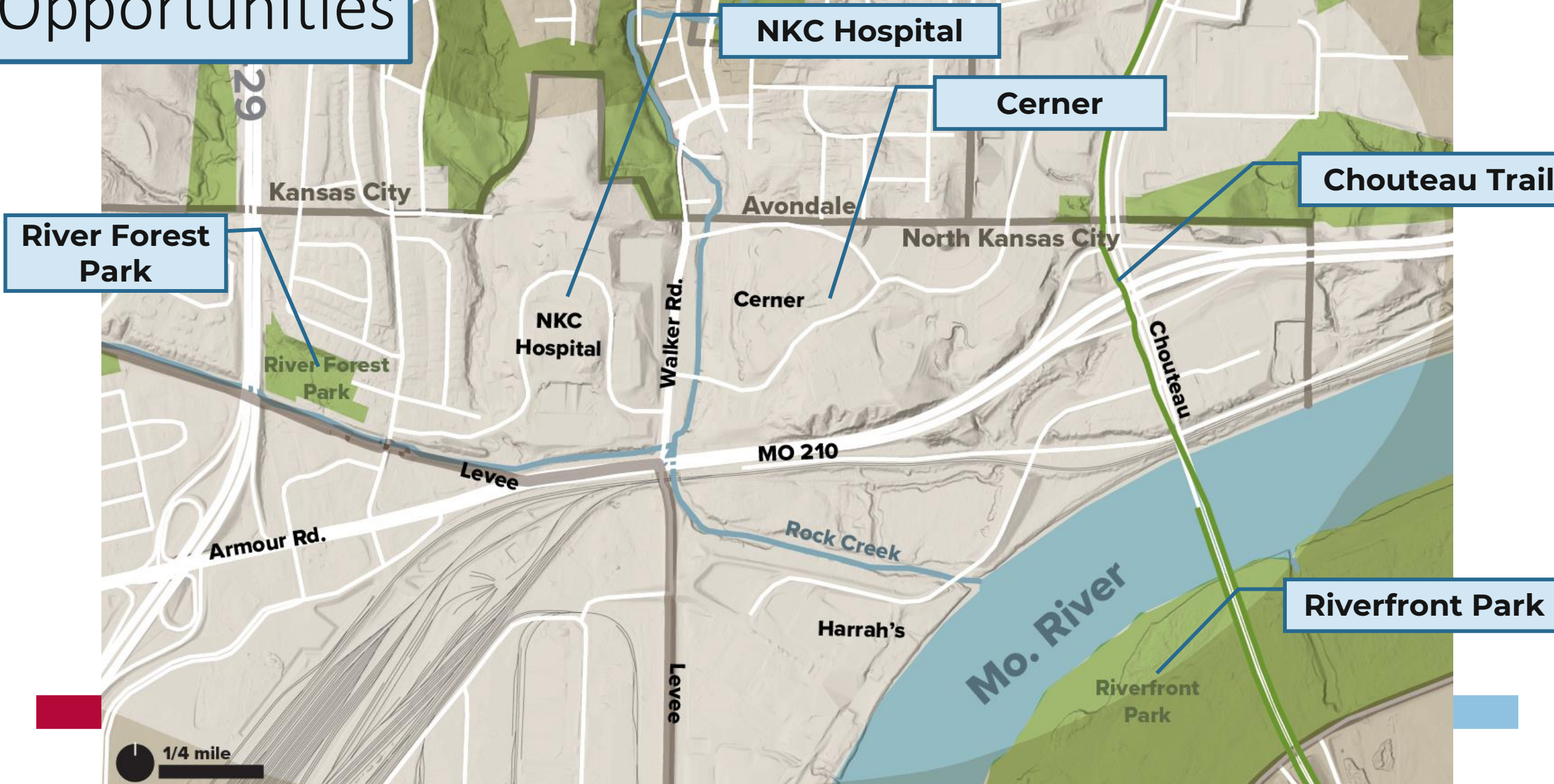
Legend

-  City Limit
 -  Railroad
 -  Existing Trail/Bike Facility
 -  Proposed Trail/Bike Facility
 -  Levee
 -  Park
-  Study Zone

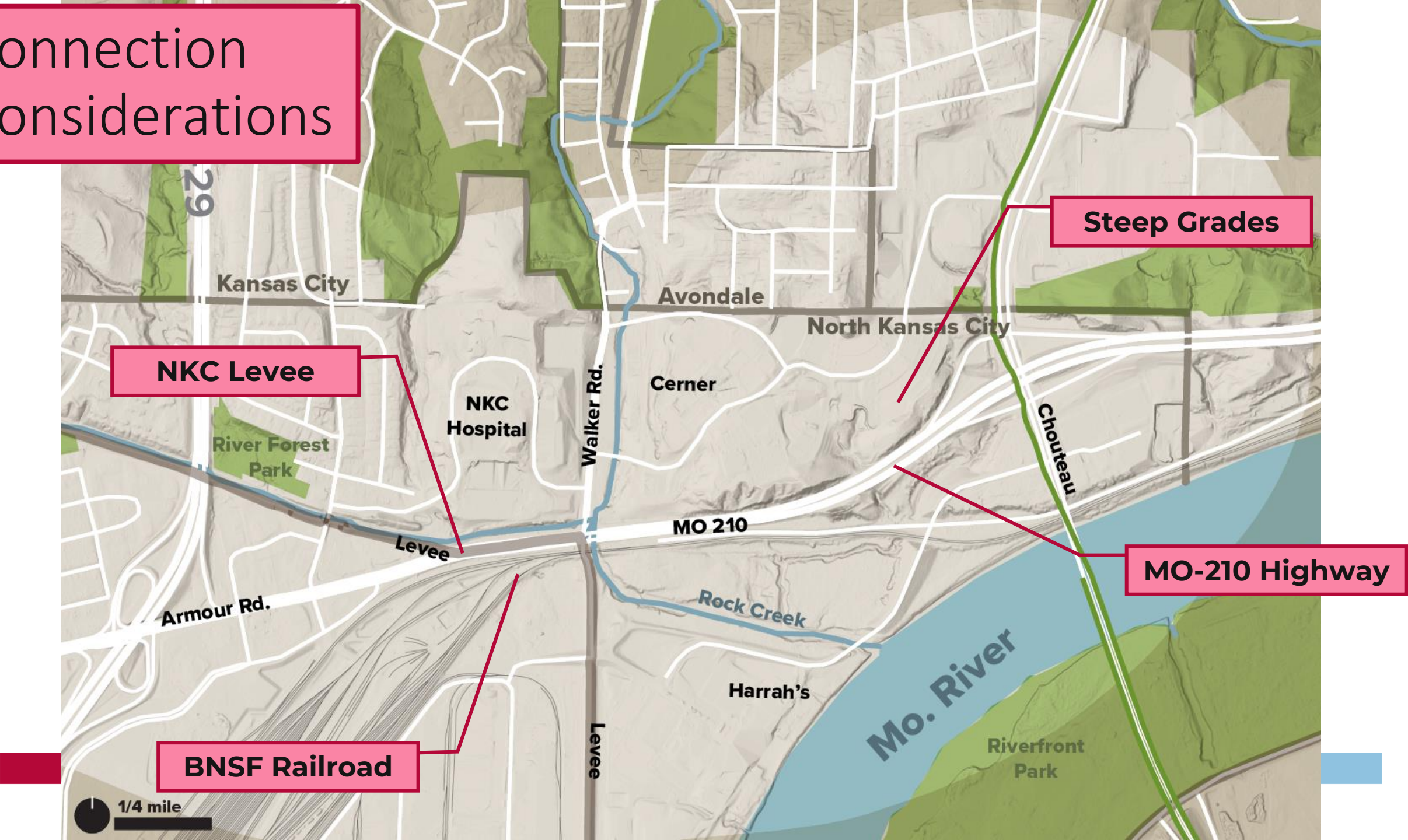
 1/2 mile

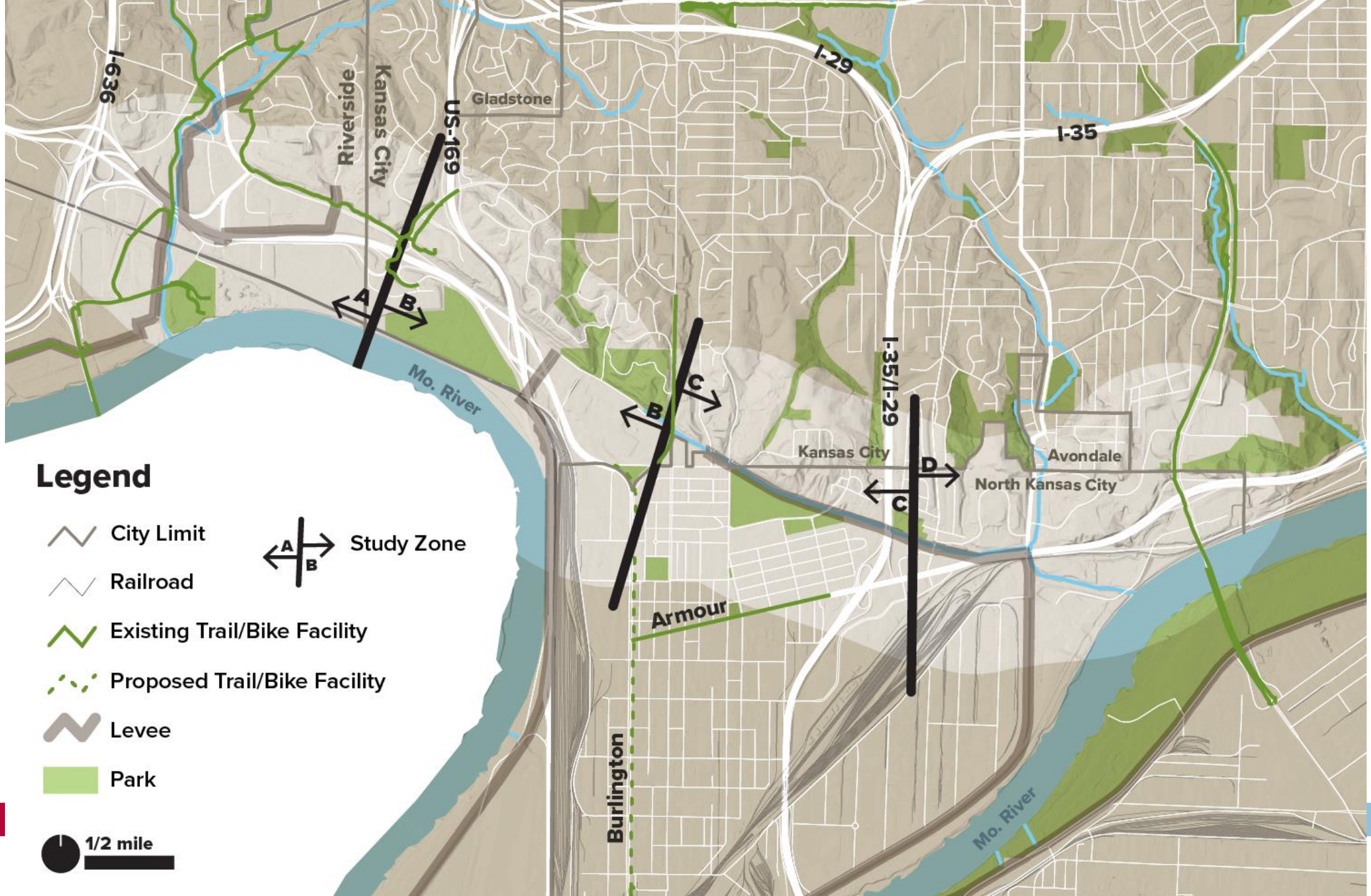
Zone D

Connection Opportunities



Connection Considerations





Legend

-  City Limit
-  Railroad
-  Existing Trail/Bike Facility
-  Proposed Trail/Bike Facility
-  Levee
-  Park



 1/2 mile



Next Steps

Focus	Timing
<p>Refined improvement concepts</p> <ul style="list-style-type: none">• Public Meeting #2• Online commenting• Meetings with key groups, agencies (as needed)	<p>Winter to spring 2024</p>
<p>Preferred concept and final planning document</p> <ul style="list-style-type: none">• Public Meeting #3• Online commenting• Meetings with key groups, agencies (as needed)	<p>Spring to summer 2024</p>

Contact us and comment!

Jay Aber, Project Manager

816-702-4223 and jay.aber@wsp.com

Online commenting is available through
February 7, 2024, at:

www.surveymonkey.com/r/MORiverNorthTrail



Questions?

Comment on the maps:

What opportunities does the Missouri River North Trail project present? Issues?

Red or pink
post-it notes for
issues

Pink or red post-
it notes for
issues

Green or yellow
post-it note for
opportunities

Green or yellow
post-it note for
opportunities