



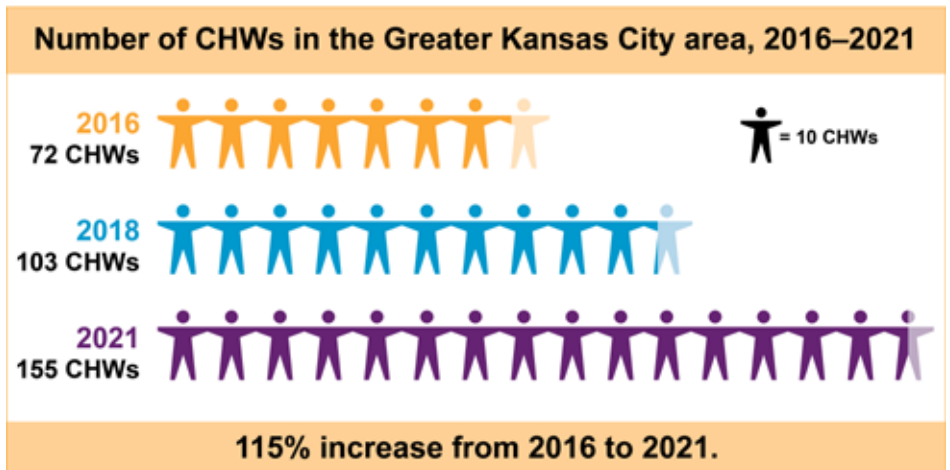
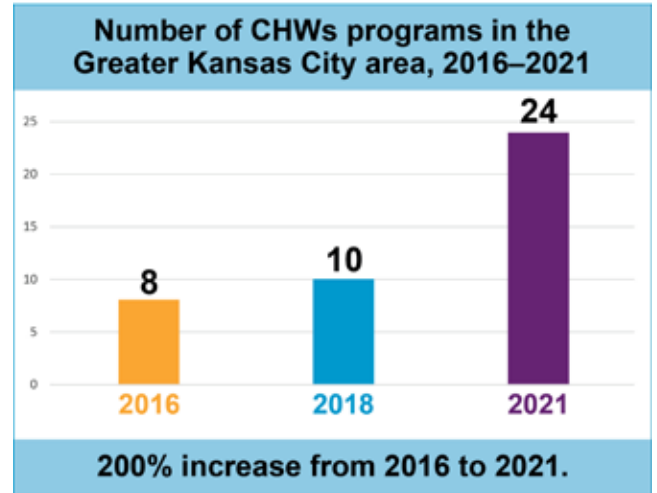
Accomplishments of the KC Regional Community Health Worker Collaborative 2016-2021

January 2022

In 2016, the KC Regional Community Health Worker Collaborative was established with the mission to integrate Community Health Workers (CHWs) into the health and human services systems through capacity building, advocacy and sustainability. The Collaborative has regular convenings, and the work is supported by the Mid-America Regional Council with funding from the Health Forward Foundation.

CHW training and support

- Developed CHW curriculum / training.
 - Curriculum developed and improved in partnership with Metropolitan Community College and involvement of partners throughout Missouri. The curriculum has been adopted for use in Missouri and Kansas.
- Developed support trainings:
 - Train-the-Trainer Program.
 - Supervisor training.
- Instituted CHW Forum for ongoing CHW support and professional development opportunities.
- Created and offered continuing education units.
 - For example, strategies for communicating the value of vaccines in the era of COVID-19.
- CHW Advocacy Training Series.
- Facilitator and leadership training opportunities for CHWs.



Statewide infrastructure

- Developed policy agenda and recommendations for CHW credentialing and payment.
- Supported Missouri and Kansas in CHW policy and professionalization efforts.
- Missouri Accomplishments:
 - Active participant on statewide CHW advisory committee to Department of Health and Senior Services.
 - Supported the development of a Missouri CHW Association.
 - Worked with state partners to develop and implement a state CHW credential.
 - Recognizes Kansas training providers for bi-state alignment.
- Kansas Accomplishments:
 - Supported development and operation of Kansas CHW Coalition
 - Advised Kansas Department of Health and Environment Workgroup on:
 - Certification for CHWs.
 - Sustainable Medicaid payment policies to support CHWs.

For more information, visit www.marc.org/communityhealthworkers or contact info@marc.org.