

Planning Sustainable Places Program

ADVANCING A SUSTAINABLE REGION PLACE BY PLACE

Pre-application Workshop

January 12, 2023



Planning Sustainable Places Background

- Program to build on previous regional planning initiatives



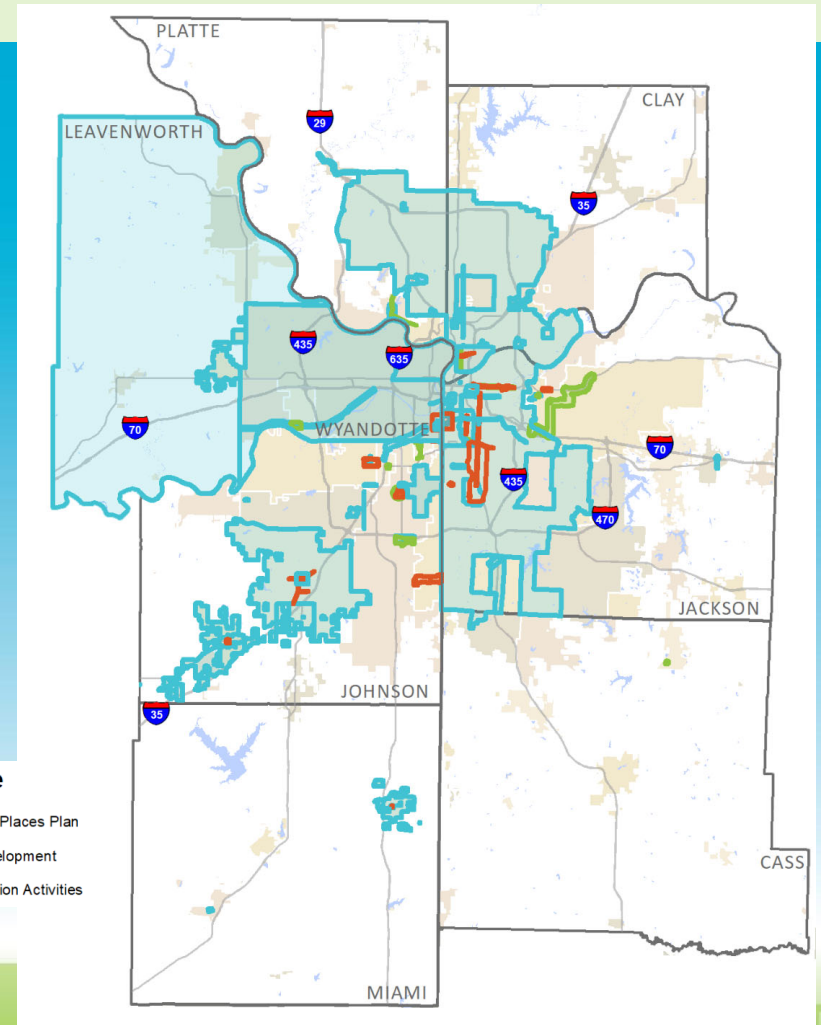
- Implements the MARC Board's adopted policy statement on regional land use direction
- Goal: help local communities advance their sustainable development projects towards implementation



VIBRANT | CONNECTED | GREEN

Planning Sustainable Places

- Projects limited to local governments and transit agencies furthering local planning projects in a variety of settings
- Mix of projects, a portion proceeding from previous funding mixed with new
- Covers the spectrum of settings from rural to urban
- Wide range of projects including downtown redevelopment, corridor plans, and neighborhood strategies

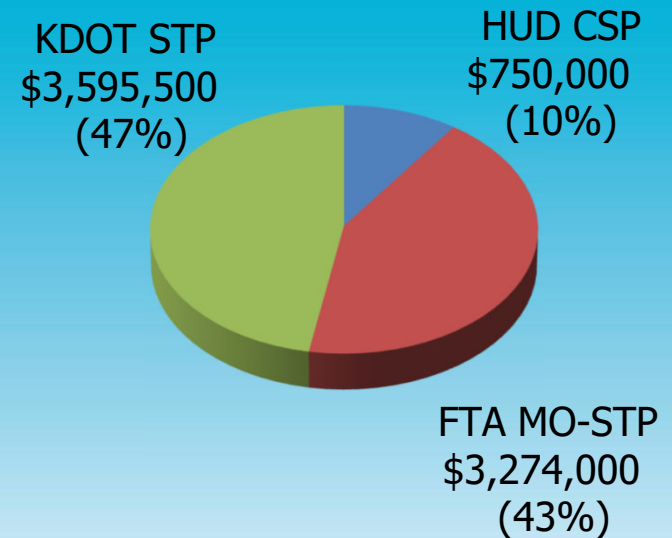


VIBRANT | CONNECTED | GREEN

Planning Sustainable Places To Date

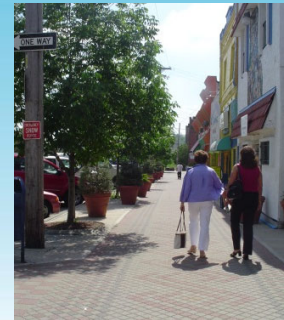
- **Total Funds**
\$11,237,077
- **178 Applications**
- **98 Projects**
47 Kansas 51 Missouri
- **Three Types of Projects**
 - Sustainable Places Plan 61
 - Project Development 27
 - Implementation Activities 10
- **Match Generated**
\$3,617,577

Funding By Source



Planning Sustainable Places

- Only local jurisdictions and transit agencies may apply.
- Projects must have a clear, strong emphasis on transportation.
- Project categories remain the same as 2023.
- Scoring criteria remain the same as 2023.



VIBRANT | CONNECTED | GREEN

2023 KS Supplementary Call for Projects Guidebook



2023 KANSAS SUPPLEMENTARY CALL FOR
PLANNING AND DEMONSTRATION PROJECTS

SUBMISSION GUIDEBOOK

Mid-America Regional Council | 600 Broadway, Suite 200
Kansas City, MO 64105 | Ph: 816/474-4240 | Fax: 816/421-7758
<https://www.marc.org/planning-sustainable-places-call-projects>

- Program Overview
- Eligibility
- Project Categories
- Evaluation Criteria
- Selection Process
- Submission Database
- Resource Maps

VIBRANT | CONNECTED | GREEN

Call for Projects

Application website: <https://gis2.marc2.org/psp/Login.html>

Application Opening: January 3, 2023

Application Deadline: January 27, 2023

Funding is limited so a regional solicitation and call for applications is being conducted.



Current Funds to be Programmed

2023 Supplemental Call

\$ 159,000 — Kansas Surface Transportation
Program (FFY 2023)

Funding is solely from STP so there must be a **strong** emphasis on transportation.

Maximum Federal Funding **\$150,000**, no minimum grant award

**Match: Minimum local cash match of 20% of total budget
NOT federal portion**



Local Cash Match and Transportation Fees

Local Cash Match Calculation

The local cash match is 20% of the total budget. It is NOT 20% of the federal funds requested. Correct calculation of local match:

$$\frac{\text{Federal Fund Request}}{0.8} = \text{Total Budget}$$

$$\frac{\$150,000}{0.8} = \$187,500$$

$$\text{Total Budget} - \text{Federal Request} = \text{Local Cash Match}$$

$$\$187,500 - \$150,000 = \$37,500$$

Transportation Fees

A project fee of 1.0% of federal funds awarded to any project selected will be charged to the project sponsor.



VIBRANT | CONNECTED | GREEN

Projects Schedule

- **January 27, 2023 4 p.m. CST**
Project submission deadline

**Call for
Projects**

- **February 2023**
MARC staff technical analysis and scoring
- **February 10 – 21, 2023**
Project submission public comment period
- **March 10, 2023**
Sustainable Places Policy Committee
evaluation & prioritization
- **March 2023**
MARC Total Transportation Policy
Committee and MARC Board adoption
- **Late April 2023**
Consultant procurement begins

**Project
selection
and work
begins**

Eligibility

Applicants: Jurisdictions (cities, counties and states) and transportation agencies located within MARC's **Kansas** metropolitan planning boundary – Johnson, Leavenworth, Miami and Wyandotte counties in Kansas – may apply for consideration.

Location: Areas within the MARC metropolitan planning organization boundary are eligible, but an emphasis will be placed on identified activity centers within our defined redevelopment area. The selection of projects will be prioritized around areas that show a “confluence of opportunities”, areas that include multiple development opportunities that support regional goals.



Project Categories

Sustainable Places Plan

This first level of planning in the PSP program focuses on looking at the big picture and crafting a vision that integrates transportation, land use and the environment and identifies project need. The project must meaningfully engage the community in a collaborative dialogue.

Project Development

This level of planning in the PSP program focuses on drilling down into a Sustainable Places type of plan. The Sustainable Places Plan does not have to be the result of a Sustainable Places Plan through MARC. Communities that have completed comparable work of a Sustainable Places Plan are encouraged to utilize the PSP Project Development opportunity to further develop their big picture plans to integrate project needs and concepts.

Implementation Activities

The Implementation Activities level of planning in the Planning Sustainable Places program focuses on pulling together the final pieces necessary to move a project from planning to preliminary engineering. This level does not include PS&E (plans, specifications and estimates) nor would it include survey work.

[Planning Sustainable Places Projects and Grantees map](#)



VIBRANT | CONNECTED | GREEN

Sustainable Places Plan Details

Sustainable Places Plan

Pre-requisites:

Vision of Future
Vibrancy

Required Element:

Robust Public
Engagement

Required Deliverable:

Implementation
Plan Detailing
Project Timeline

Could consider addressing:

- New and/or revised land use strategies
- Transportation demand-reduction measures
- Internal mobility enhancements – traffic calming, pedestrian, transit, and/or bicycle circulation, safety and security for all modes
- Continuity of local streets in community
- Need/identification of future transit
- Connectivity of transportation to other centers
- Public and private investment and implementation strategy
- Assembly of Walk-friendly Community applications



VIBRANT | CONNECTED | GREEN

Project Development Details

Project Development Activities

Pre-requisites:

Vision of Future
Vibrancy

Timeline

Elements developed
in previous plan

Required Element:

Robust Public
Engagement

Required Deliverables:

Detailed plan
including Budget
(Sources & Uses)
Document

Could consider addressing:

- Transportation project feasibility analysis
- Parking facility or management plan
- Bicycle/pedestrian project plan
- Transit project or facility plan
- Multi-modal corridor plans
- Green and complete streets
- Environmental mitigation plan or restoration plan
- Design guidelines

Implementation Activities Details

Implementation Activities

Pre-requisites:

Vision of Future Vibrancy Elements developed in previous plan(s)

5 Year Schedule: Timeline including adoption into TIP/CIP for design

Budget (Sources & Uses)

Required Element:

Robust Public Engagement

Required Deliverables:

i.e. Sketch plan; renderings; elements for an RFQ

Could consider addressing:

- Project scoping study
- Cooperative agreements
- Public information plan for implementation
- [MO] Planning and scoping alternatives outlining public information plan
- Typical cross-sections based on typical ROW, not site measured specifics
- Rough cost estimates for fitting in ROW but not design
- Finish Recommended Plan with deliverable as memorandum or report
- Identification of needed ROW but not specific details; identify critical issues
- Plan should address the final state for a long term reality, i.e. moving from 2 lane to future arterial
- Outline street classification and associated ROW dimensions
- Outline how ROW will increase if planning for trail system
- Does not include National Environmental Policy Act (NEPA) process
- Alignment studies

Evaluation Criteria - Context

- General information
- Project financial information
- Project location characteristics
 - Destinations
 - Presence of people
 - Land use types
 - Housing variety
 - Minority populations
 - Stormwater runoff
 - Connections



VIBRANT | CONNECTED | GREEN

Evaluation Criteria - Scored

- Intent
 - How does the project impact travel choices, land use patterns, environmental stewardship, economic growth, etc.
- Location
 - Is the project located in a redevelopment area, economic justice tract, regional development center or mobility hub?
- Partnership
 - How does the project demonstrate partnership with other stakeholders?
- Implementation
 - Does the project demonstrate a commitment to or make steps toward implementation?

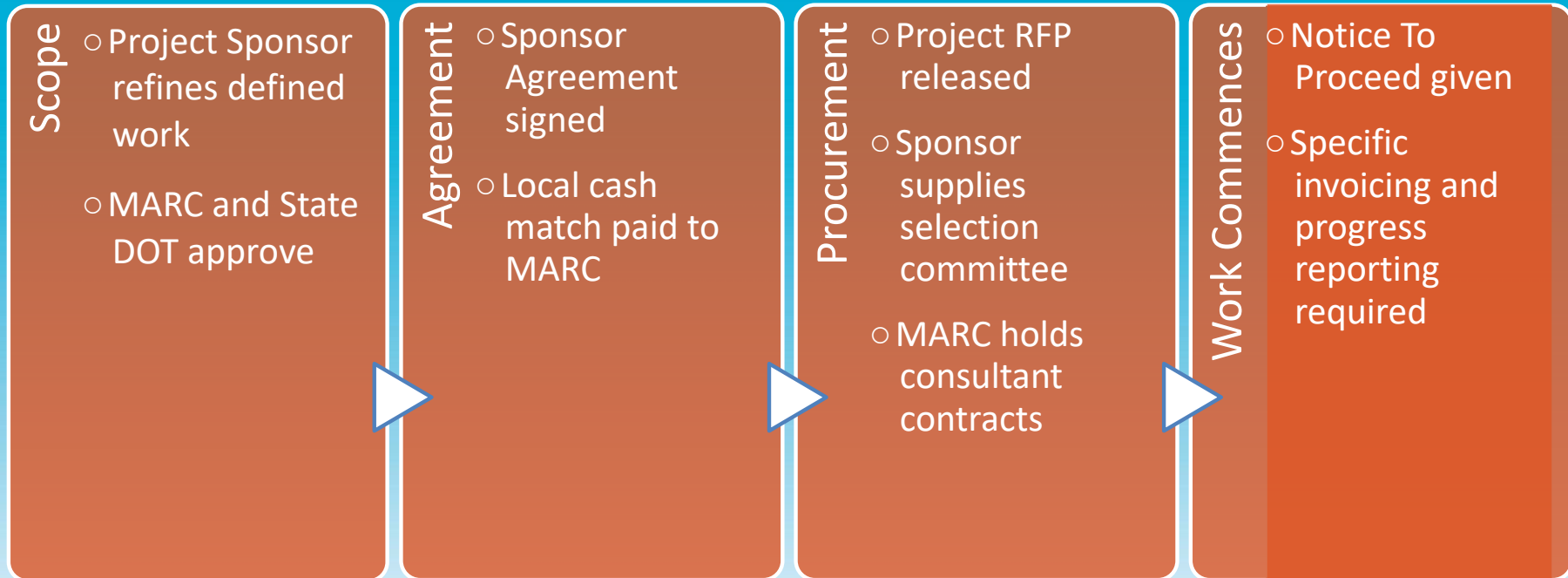


Evaluation and Recommendation Process

- After call closes on January 27, 2023, MARC staff will do the initial technical analysis of submissions. Projects will be evaluated on scoring criteria and how well they support the program goals.
- The Sustainable Places Policy Committee, State DOT and FHWA will then evaluate the provided information and scores, identify gaps, assess priorities and formulate a recommended list of projects.
- The recommended list of projects will then be presented to MARC's Total Transportation Policy Committee and MARC's Board of Directors for approval.



Procurement Process



VIBRANT | CONNECTED | GREEN

Submission Process

Submission Page: <https://gis2.marc2.org/psp/Login.html>

Create an Account

The first time you use the site, select "Register". Your jurisdiction or agency may have more than one account.

- Add a Project

Log in to the database, click "Start New Application". A blank form will open. Information can be added incrementally during multiple sessions and will be private until the call for projects closes. If your match is less than 20% of the total, the system will not allow you to submit your application.

- Revise a Project

Each time you log in you can edit your application.

- Delete a Project

Click the "Delete" button to remove a project in your list of projects.

Resource Maps

[Planning Sustainable Places Atlas](#)

- MARC provides an online mapping application to project sponsors.
- You can view the proximity of projects to regional assets.
- Layers in the PSP Atlas:
 - Administrative boundaries
 - Regional planning data
 - Mobility services
 - Location characteristics
 - Population characteristics



VIBRANT | CONNECTED | GREEN

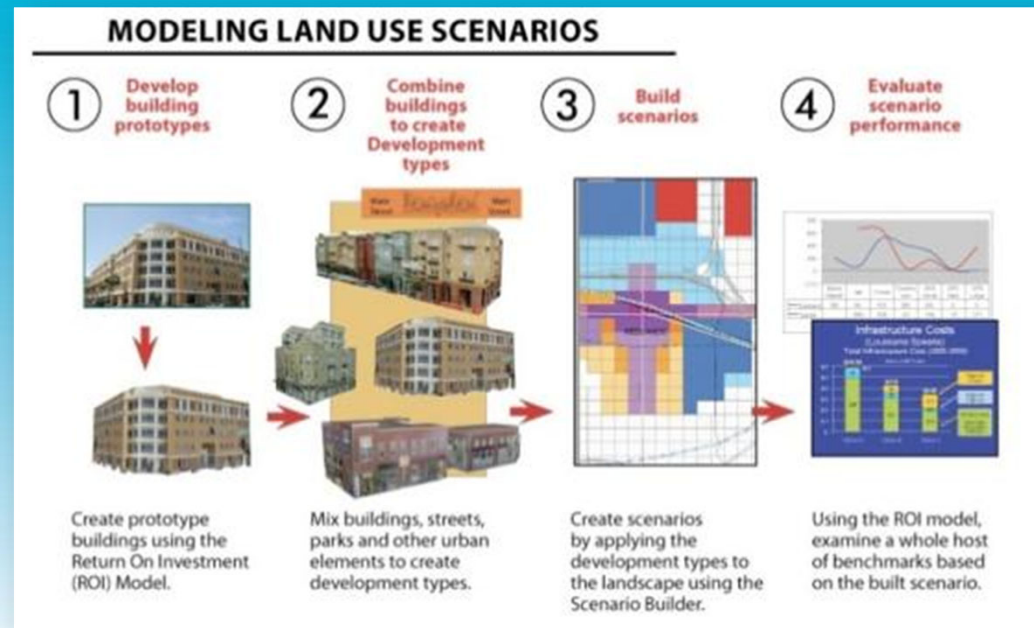
Planning Resources

- MARC offers a number of planning resources to support local communities seeking 2023 PSP funding.
- The resources offered include:
 - Scenario Planning
 - Data Indicators
 - Environmental Data
 - Visualization
 - Market Information



Scenario Planning

- An analytical tool that offers a framework to develop a shared future vision for a community or project.
- MARC has invested in Envision Tomorrow Plus but it is not a required product.



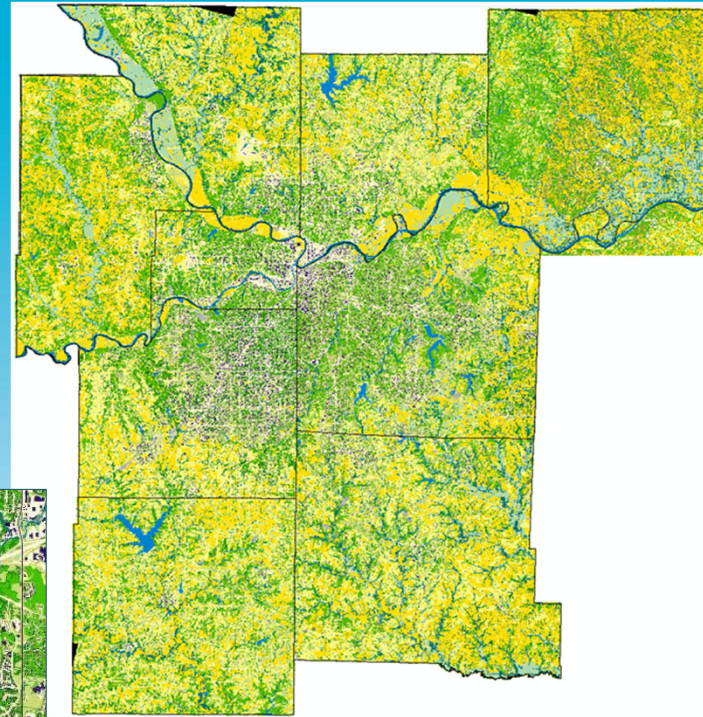
Data Indicators

- Indicators provide a means to define outcomes and track community progress to measure change
- Indicators may include:
 - Community population
 - Income
 - Transportation resources
 - Education levels
 - Employment
 - Air quality
- Sources for indicators include the U.S. Census Bureau, local government agencies, the Center for Disease Control and more.



Environmental Data

- High-resolution land cover data and maps
- Useful for
 - Community Planning
 - Environmental Planning
 - Site Assessment



Visualization

- **Visualization Reference Library**
 - Online database of local projects
 - Photos and diagrams can be used as examples
- **Custom Visualizations**
 - Customized to local site
 - Before and after views
 - Uses common tools such as Photoshop or SketchUp



Visualization



Visualization



VIBRANT | CONNECTED | GREEN

Visualization



Visualization



VIBRANT | CONNECTED | GREEN

Market Information

- Available Resources
 - ESRI Community Analyst – Demographics, Psychographics, & Business Data
 - CoStar – Business rents and vacancy
 - Dodge – construction
 - Census data
- Use to evaluate projects, market vision, plan for community change

LifeMode Group	Segments		
High Society	Top Rung	Suburban Splendor	Connoisseurs
Upscale Avenues			
Metropolis			
Solo Acts			
Senior Styles			
Scholars and Patriots			
High Hopes			
Global Roots			
Family Portrait			
Traditional Living			
Factories and Farms			
American Quilt			

LIFE STAGE INFLUENCES HOUSING CHOICES

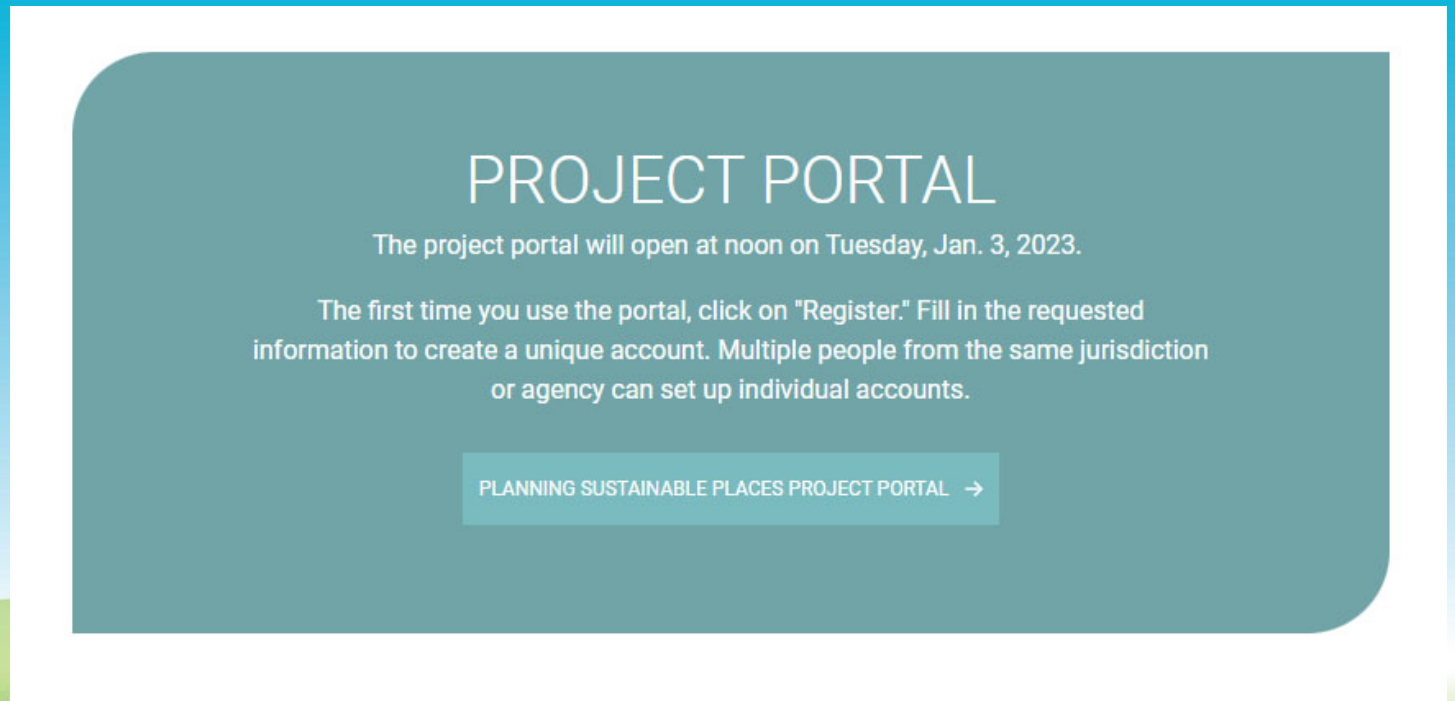
Year	Student Housing	Rental Housing	Rent as Couple / 1st Home	Young Family Own	Mature Family Own	Empty Nester Downsize Own	Buy/Rent Retirement Home
2010	Gen Y	Gen Y	Gen X Gen Y	Gen X	Baby B	Baby B	Eisen Baby B
2015	Gen Y	Gen Y	Gen Y	Gen X Gen Y	Baby B Gen X	Baby B	Eisen Baby B
2020	Gen Y Gen Z	Gen Y	Gen Y	Gen Y	Gen X	Baby B Gen X	Eisen Baby B
2025	Gen Z	Gen Y Gen Z	Gen Y Gen Z	Gen Y	Gen X Gen Y	Gen X Baby B	Baby B
2030	Gen Z	Gen Z	Gen Z	Gen Y	Gen X Gen Y	Gen X Baby B	Baby B

VIBRANT | CONNECTED | GREEN

PSP Application Portal

The application portal can be found at <https://gis2.marc2.org/psp/Login.html>

Logins may be shared but DO NOT ACCESS AT THE SAME TIME – Program will OVERWRITE entries.



Questions

If you have any questions, please contact:

Beth Dawson

Mid-America Regional Council

816.701.8325

bdawson@marc.org

Taylor Cunningham

Mid-America Regional Council

816.701.8228

tcunningham@marc.org

