

Agencies and organizations in the Kansas City metropolitan area will continue to cooperate to prevent, protect, mitigate, respond to and recover from the threats and hazards the region faces through coordinated planning, information and resource sharing, training and exercise, and critical equipment replacement.

REGIONAL PRIORITIES:

Planning and Coordination

Training and Exercises

Information Sharing

Sustainment of Critical Equipment

GOALS

OBJECTIVES

1 Operational Coordination

- 1.1: Use NIMS and ICS principles for operational coordination.
- 1.2: Maintain RHSCG as planning body for regional priorities and decisions.
- 1.3: Maintain contact information for all partners to support coordination.
- 1.4: Maintain database of regional resources and mobilization protocols.

2 Planning and Recovery

- 2.1: Understand threats and hazards and capabilities required for each.
- 2.2: Maintain regional plans to complement local plans.
- 2.3: Increase regional capacity through resource identification, training and pre-planning.
- 2.4: Include recovery capabilities and subject matter experts in regional training and exercise activities.

3 Public Information and Warning

- 3.1: Provide mechanisms to share preparedness information.
- 3.2: Support local ability to deliver information to impacted populations.
- 3.3: Establish procedures for mutual aid for emergency public information as needed in large-scale emergencies.

4 Prevention and Protection

- 4.1: Maintain KCTEW networks and systems to receive, analyze and share threat information.
- 4.2: Support protection efforts at significant critical infrastructure.
- 4.3: Maintain regional EOD team capabilities to handle specialized operations in CBRNE environments.
- 4.4: Maintain regional Enhanced Tactical Team capabilities to handle specialized operations in CBRNE environments.
- 4.5: Increase collaboration between public and private sectors to support cybersecurity for critical infrastructure.

5 Mitigation

- 5.1: Understand the potential impacts of threats and hazards and implement strategies to minimize damage.
- 5.2: Maintain the CERT program as part of community engagement efforts.
- 5.3: Develop support networks and resources to increase disaster preparedness for community organizations serving people with access and functional needs.

6 Response

- 6.1: Maintain systems for interoperable communications among jurisdictions.
- 6.2: Manage information to support a common operating picture of incidents with regional significance.
- 6.3: Maintain regional Enhanced HazMat Team capabilities to handle specialized operations in CBRNE environments.
- 6.4: Maintain regional Technical Rescue Team capabilities for search and rescue operations (land and water based).
- 6.5: Maintain resources and processes to manage human remains and support Victim Information Center operations.
- 6.6: Provide technical guidance and resources to support responder safety.
- 6.7: Support local efforts to establish secure environments in affected areas.
- 6.8: Sustain capacity for coordinated pre-hospital treatment and transport.
- 6.9: Support local public health emergency preparedness capabilities.
- 6.10: Sustain regional hospital capabilities to support medical surge.
- 6.11: Establish and maintain comprehensive mass care strategies.

Regional Plans

- Regional Coordination Guide **1**
- ESF 1 – Transportation
- ESF 2 – Communications **F**
- ESF 3 – Public Works and Engineering
- ESF 4 – Firefighting **G J**
- ESF 5 – Information and Planning **P Q**
- ESF 6 – Mass Care, Emergency Assistance, Temporary Housing, and Human Services **L M**
- ESF 7 – Logistics **O**
- ESF 8 – Public Health and Medical **H N K**
- ESF 9 – Search and Rescue **I**
- ESF 10 – Oil and Hazardous Materials **J**
- ESF 11 – Agriculture and Natural Resources
- ESF 12 – Energy
- ESF 13 – Public Safety and Security **A B C D**
- ESF 14 – Community Recovery **E 2**
- ESF 15 – Emergency Public Information **3**

- Mass Casualty Incident Plan **H**
- Mid-America LEPC Regional Hazardous Materials Emergency Preparedness Plan **J**
- Regional Mass Fatality Plan **H K**
- Regional Evacuation Guide **L**
- Regional Hazard Mitigation Plan **E**
- Tactical Interoperability Communications Plan **F**

Regional Resource Investments

- A** KC-Metro Disaster Tactical Response Team (KCMDTRT) — 1 Regional Team
- B** Terrorism Early Warning Regional Fusion Center
- C** Regional Explosive Ordnance Disposal (EOD) Teams — 7 Teams
- D** Maritime Domain Awareness Assets
- E** Community Emergency Response Teams (CERT)
- F** Regional Interoperable Communications Resources (MARRS, RAMBIS, Communications Trailers)
- G** Firefighting (CBRNE Command Vehicle, Foam Tender)
- H** Regional Health and Medical Resources (MCI Trailers, Hospital Trailers, Public Health Trailers, Oxygen Caches, Duo Dote Kits)
- I** Regional Technical Search and Rescue System/Resources — 6 teams
- J** Regional HAZMAT Teams — 7 teams
- K** Kansas City Regional Mortuary Operational Response Group (KCRMORG) Personnel and Equipment — 1 regional team
- L** Regional Mass Care Resources (3 shelters equipped with emergency generators, 12 Mass Care Trailers, 3 DME Trailers)
- M** Medical Reserve Corps
- N** X-Sentinel
- O** Badging and Accountability System
- P** WebEOC
- Q** Geospatial Information Systems
- R** Exercise Support Trailer

[PENDING DHS APPROVAL]

MARCH 2015

GOALS AND CAPABILITIES

1 Operational Coordination Achieve and maintain regional capabilities to quickly communicate and coordinate operations among emergency services agencies, critical infrastructure operators, other potentially impacted entities, and state and federal partners to protect the public and the region's critical infrastructure and systems against disasters and terrorism. Implement an integrated response structure to set operational priorities, mobilize resources and engage in response and recovery activities.

Core Capabilities OPERATIONAL COORDINATION

2 Planning and Recovery Support and strengthen local and regional prevention, protection, mitigation, response and recovery plans.

Core Capabilities PLANNING • INFRASTRUCTURE SYSTEMS • ECONOMIC RECOVERY • HOUSING • HEALTH AND SOCIAL SERVICES

3 Public Information and Warning Local governments, community organizations, businesses and individuals have relevant and timely information to prepare for threats and hazards and take action before and after disasters.

Core Capabilities PUBLIC INFORMATION AND WARNING

4 Prevention and Protection Maintain capabilities necessary to prevent and protect against terrorism and other hazards.

Core Capabilities INTELLIGENCE AND INFORMATION SHARING • FORENSICS AND ATTRIBUTION • ACCESS CONTROL • RISK MANAGEMENT • PHYSICAL PROTECTIVE MEASURES • INTERDICTION AND DISRUPTION • CYBERSECURITY

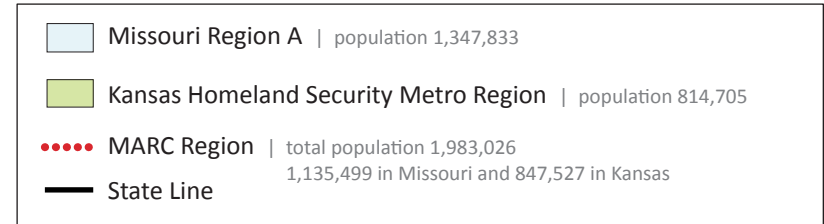
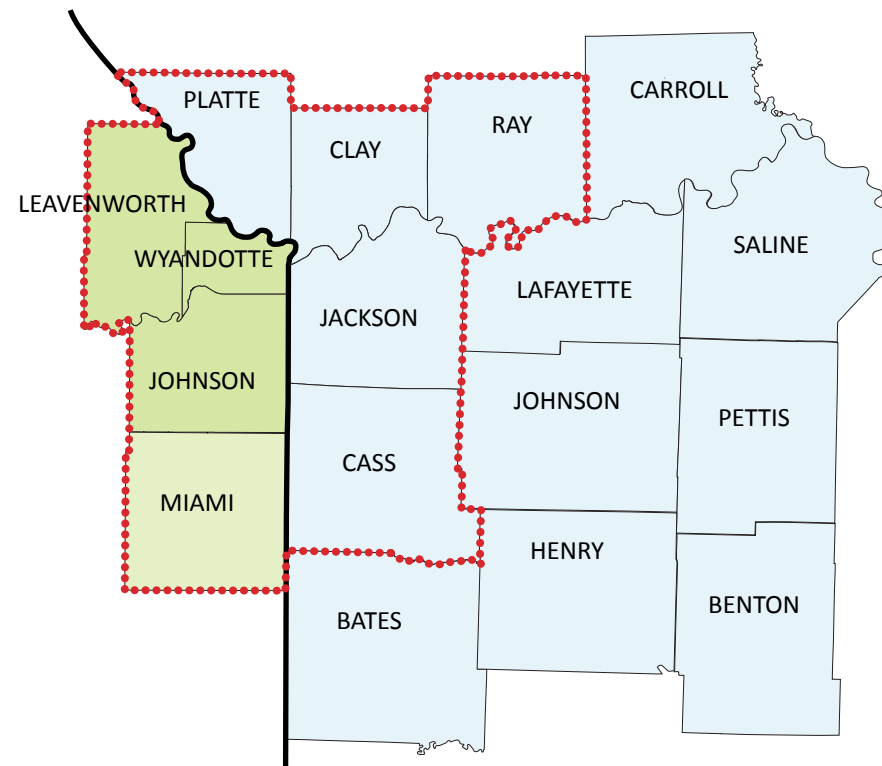
5 Mitigation Reduce loss of life and property by lessening the impacts of disasters that occur within the Kansas City region.

Core Capabilities THREATS AND HAZARD IDENTIFICATION • COMMUNITY RESILIENCE • LONG-TERM VULNERABILITY REDUCTION

6 Response Maintain regional capabilities to respond effectively to save lives, protect property and the environment, and meet basic human needs after a disaster.

Core Capabilities OPERATIONAL COMMUNICATIONS • SITUATIONAL ASSESSMENT • ENVIRONMENTAL RESPONSE/HEALTH AND SAFETY • MASS SEARCH AND RESCUE • FATALITY MANAGEMENT • ON-SCENE SECURITY AND PROTECTION • PUBLIC HEALTH AND MEDICAL SERVICES • MASS CARE SERVICES

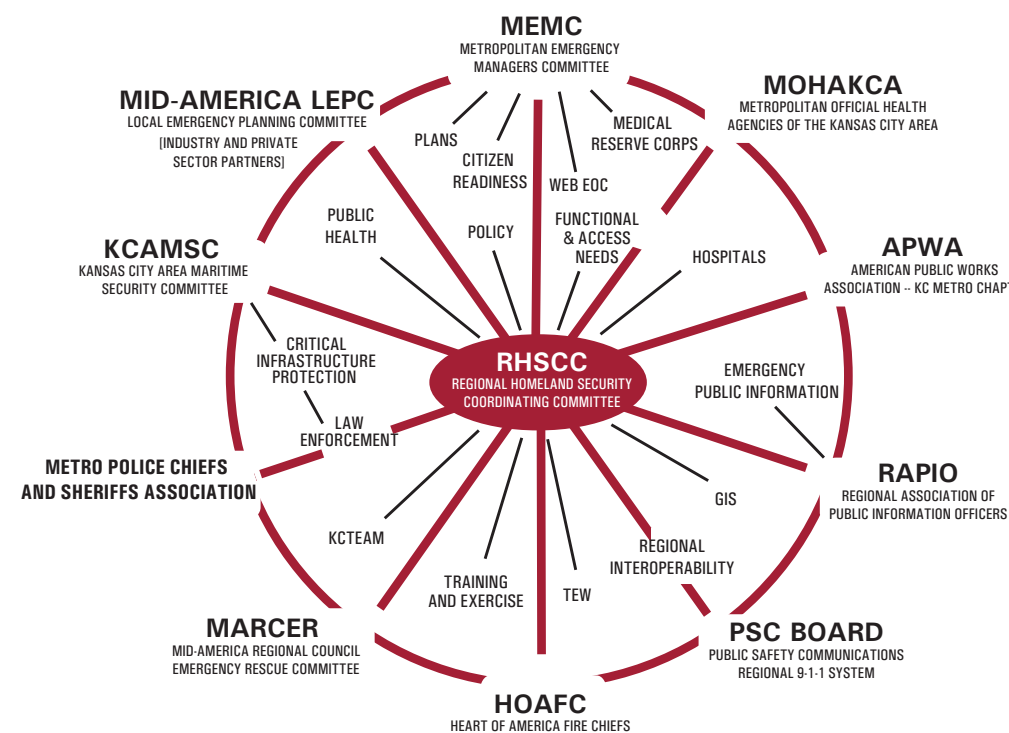
THE KANSAS CITY REGION



The MARC Region

- 2 States
 - 9 Counties
 - 119 Cities
 - 4,423 Square Miles
 - 1.98 Million People
 - 31 Hospitals
 - 34 EMS Agencies
 - 81 Fire Departments/Districts
 - 76 Police/Sheriff Departments
 - 18 Emergency Operations Centers
 - 11 Public Health Agencies
- Including an estimated:
- 385,420 with functional/access needs:
 - Hearing: 56,596
 - Vision: 32,933
 - Cognitive: 75,344
 - Ambulatory: 110,469
 - Self-Care: 39,060
 - Independent Living: 71,018
 - 207,261 with limited English proficiency
 - 418,000 living below poverty levels
 - 492,931 under the age of 18

WHOLE-OF-THE-COMMUNITY ENGAGEMENT COMMITTEE ORGANIZATION CHART



ABBREVIATION KEY

- AMSC = Area Maritime Security Committee
- CBRNE = Chemical, Biological, Radiological, Nuclear & Explosive
- GIS = Geographic Information Systems Subcommittee
- HOAFC = Heart of America Fire Chiefs
- HOSP = Hospital Subcommittee
- KC TEAM = KC Tracking of Emergency Assets & Members
- INTEROP = Regional Interoperability Committee
- LE = Law Enforcement Subcommittee
- MARCER = Mid-America Regional Council Emergency Rescue
- MEMC = Metropolitan Emergency Managers Committee
- MEMC/PLANS = MEMC Plans Subcommittee
- MHFAN = Mental Health/Functional and Access Needs
- PH = Public Health Subcommittee
- POLICY = RHSCC Policy Subcommittee
- RAPIO = Regional Association of Public Information Officers
- RHSCC = Regional Homeland Security Coordinating Committee
- T&E = Training and Exercise Subcommittee

CONTACTS:

RHSCC Co-Chair Hannes Zacharias, Johnson County, Kansas
 RHSCC Co-Chair Kirk Davis, Gladstone, Missouri
 Erin Lynch, elynch@marc.org
 Emergency Services and Homeland Security Program Director
 Mid-America Regional Council
 600 Broadway, Suite 200, Kansas City, MO 64105
 Ph. 816-474-4240 | Fax 816-421-7758 | www.marc.org